

Two Bedroom Terraced House

Grieve Close, Tongham, Surrey, GU10 1BZ

Price: £325,000

- Two Double Bedroom House
- Walking Distance to Local Amenities
- South Facing Garden
- Garage in Nearby Block
- Cul-de-Sac Location
- Good Transport Links
- Spacious Living Room
- EPC: C (73)



Description

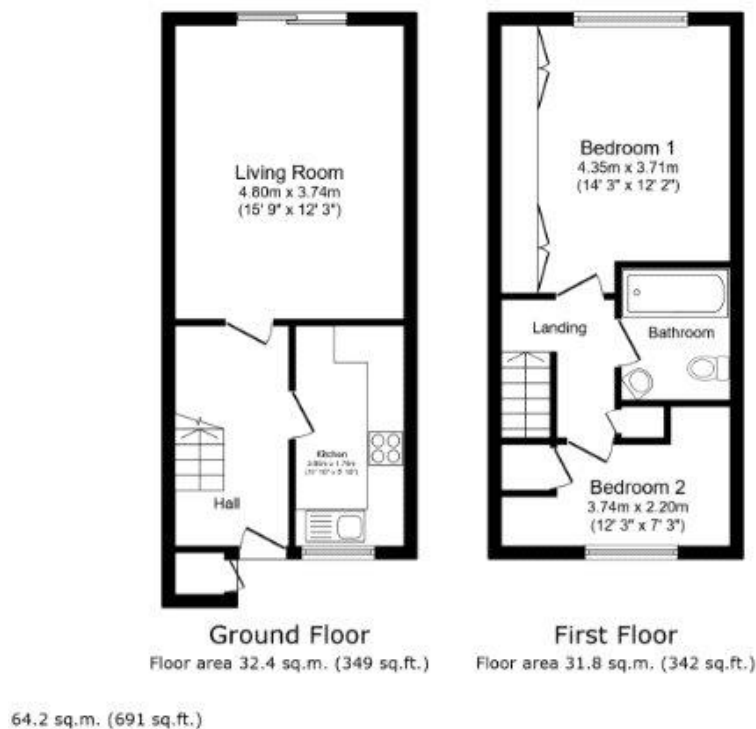
A lovely two-bedroom terrace property, situated in a cul-de-sac location right in the heart of Tongham village. The property benefits from a beautiful, refitted kitchen and bathroom, plus a living room with patio doors leading directly out to the lovely private rear garden. There is a garage in a nearby block and plenty of residential parking. It is close to the village shops and all the amenities. This well presented home really is a gem and would make a brilliant first-time purchase or investment buy.

Outside

To the front is a small garden with a lawn area and pathway which leads to the front door. To the rear is a good-sized garden which is mostly laid to lawn, with a patio area and fully enclosed by wood panel fencing.

To view the Material Information Certificate for this property please click [Here](#) or contact us to request a copy.

Floorplan



TO ARRANGE A VIEWING PLEASE CONTACT:
Tel: **01252 361550** or Email: **info@bridges.co.uk**



Important Notice - These particulars are set out as a general outline only for the guidance of intended purchasers/tenants and do not form part of any offer or contract and must not be relied upon as statements or representations of fact. Purchasers/Tenants must satisfy themselves by inspection or otherwise as to their correctness.