



## Four Bedroom End of Terrace House

**Cranberry Walk, Blackwater, Camberley, GU17 9DT**

Guide Price: £475,000

- Four Bedroom End of Terrace House
- Extended and Much Improved
- Refitted Kitchen
- En Suite and Bathroom
- Low Maintenance Rear Garden
- Office/Outbuilding
- Single Garage in Block
- EPC: C (71)





## Description

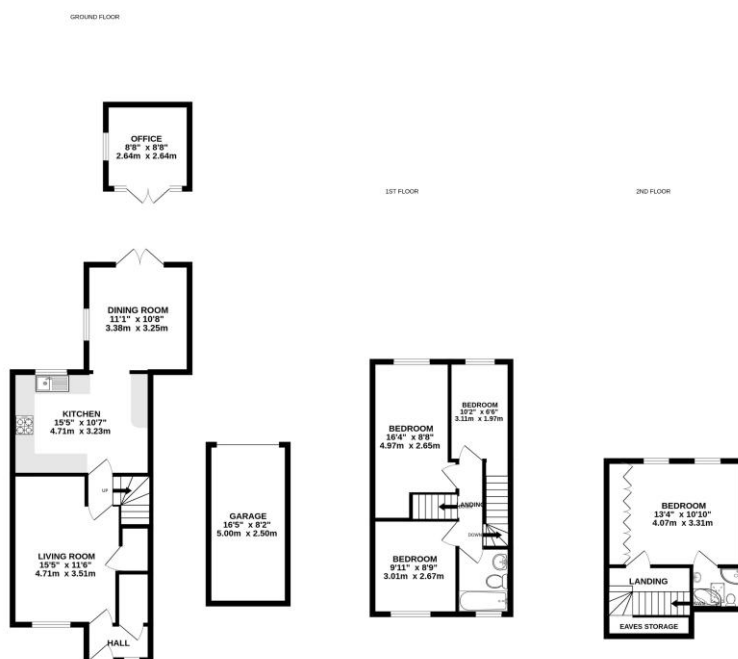
An extended and much improved four-bedroom end of terrace house located in a quiet location within easy access to great commuter links and local schools. The property is offered to the market with no onward chain. The accommodation comprises a front aspect living room, refitted kitchen/breakfast room opening on to the extended dining room and cloakroom all on the ground floor. To the first floor you have two double bedrooms, a further single bedroom and refitted family bathroom. And on the second floor you have the principal bedroom with fitted wardrobes and a refitted en suite shower room.

## Outside

Externally the property benefits from an enclosed and landscaped low maintenance rear garden, mainly laid to artificial turf, with a patio area and office.

To view the Material Information Certificate for this property please click [Here](#) or contact us to request a copy.

## Floorplan



TO ARRANGE A VIEWING PLEASE CONTACT:

Tel: **01276 685544** or Email:

**camberley@bridges.co.uk**



Important Notice - These particulars are set out as a general outline only for the guidance of intended purchasers/tenants and do not form part of any offer or contract and must not be relied upon as statements or representations of fact. Purchasers/Tenants must satisfy themselves by inspection or otherwise as to their correctness.