



Two Bedroom Terraced House

Derry Close, Ash Vale, Surrey, GU12 5SR

Price: £315,000

- Two Double Bedrooms
- Cul-de-Sac Setting
- Parking
- Private Garden
- Cloakroom
- Complete Chain Above
- Walking Distance to Local Amenities
- EPC: C (69)



Description

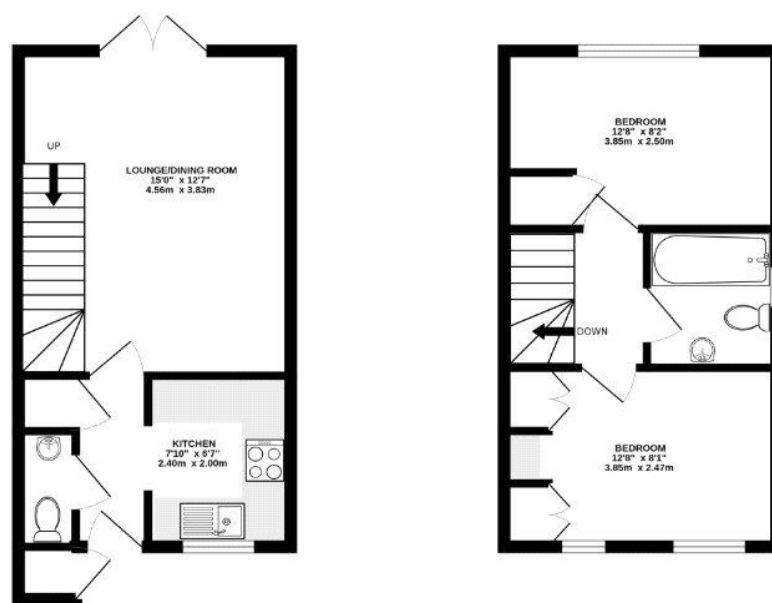
Located within the popular Old Farm Place development is this two bedroom freehold house with parking and private garden. The property is in an ideal location, within walking distance of the local amenities, rail station and only a short walk from the local nature reserve.

The downstairs boasts a fitted kitchen with plenty of work top and cupboard space, a spacious living room / diner with doors leading into the garden and a cloakroom. Upstairs benefits from two double bedrooms and a family bathroom.

Outside

Outside boasts parking and a private garden.

Floorplan



TOTAL FLOOR AREA : 580 sq.ft. (53.9 sq.m.) approx.
 Whilst every attempt has been made to ensure the accuracy of the floorplan contained here, measurement of doors, windows, rooms and any other items are approximate and no responsibility is taken for any error, omission or misstatement. This plan is for indicative purposes only and should not be used as such by any prospective purchaser. The position, location and dimensions shown have not been verified and no guarantee as to their accuracy or efficiency can be given.
 MADE BY: MAPPAC (01223)



TO ARRANGE A VIEWING PLEASE CONTACT:
 Tel: **01252 361550** or Email: **info@bridges.co.uk**



Important Notice - These particulars are set out as a general outline only for the guidance of intended purchasers/tenants and do not form part of any offer or contract and must not be relied upon as statements or representations of fact. Purchasers/Tenants must satisfy themselves by inspection or otherwise as to their correctness.