



Two Bedroom Apartment

Kingsley Square, Fleet, Hampshire, GU51 1AJ

Price: £280,000

- Two Double Bedrooms
- First Floor Apartment
- En Suite to Principal Bedroom
- Elvetham Heath Development
- Allocated Parking
- Balcony
- Estimated Rental Price: £1,450 pcm
- EPC: C (79)



Description

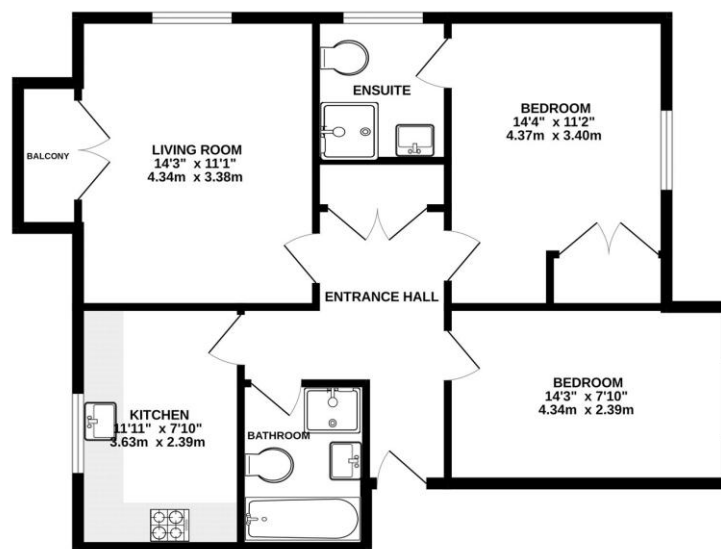
Offered to the market with no onward chain, this immaculately presented two-bedroom apartment is tucked away in a desirable corner of Elvetham Heath. The property features a spacious open plan living/dining room with patio doors opening onto a private balcony, creating a light and welcoming space to relax or entertain. The kitchen also offers room to dine, adding to the practicality. Both bedrooms are generously sized and can comfortably accommodate double beds, with the principal bedroom further enhanced by built-in wardrobes and a stylish en suite. A modern family bathroom completes the accommodation.

Outside

The property is situated within the sought-after Elvetham Heath development and benefits from a long lease, two allocated parking spaces and a balcony accessed via double doors from the living room.

To view the Material Information Certificate for this property please click [Here](#) or contact us to request a copy.

Floorplan



Whilst every attempt has been made to ensure the accuracy of the floorplan contained here, measurements of doors, windows, rooms and any other items are approximate and no responsibility is taken for any error, omission or mis-statement. This plan is for illustrative purposes only and should be used as such by any prospective purchaser. The services, systems and appliances shown have not been tested and no guarantee as to their operability or efficiency can be given.
Made with Metropack CPO2.



TO ARRANGE A VIEWING PLEASE CONTACT:
Tel: **01252 361550** or Email: **info@bridges.co.uk**



Important Notice - These particulars are set out as a general outline only for the guidance of intended purchasers/tenants and do not form part of any offer or contract and must not be relied upon as statements or representations of fact. Purchasers/Tenants must satisfy themselves by inspection or otherwise as to their correctness.