



## Two Bedroom Apartment

**Wellesley Gate, East Station Road, Aldershot, Hampshire, GU12 4JB**

Price: £210,000

- Top Floor Two Double Bedroom Apartment
- Newly Installed Heating System
- New Windows Throughout
- Residential Parking
- Ideal Residential Location
- Must Be Seen to Be Appreciated
- En Suite to The Principal Bedroom
- EPC: D (59)





## Description

A recently improved top floor apartment situated in a well regarded residential area, just a short walk to the mainline station which offers a direct link to London Waterloo.

On entering the property, you are greeted with a light and airy hallway which leads to all the living accommodation. The property offers a principal suite with an ensuite and a feature window allowing lots of natural light. The main living room offers a dual aspect windows leading to the kitchen. The property further offers an additional double bedroom and a family bathroom.

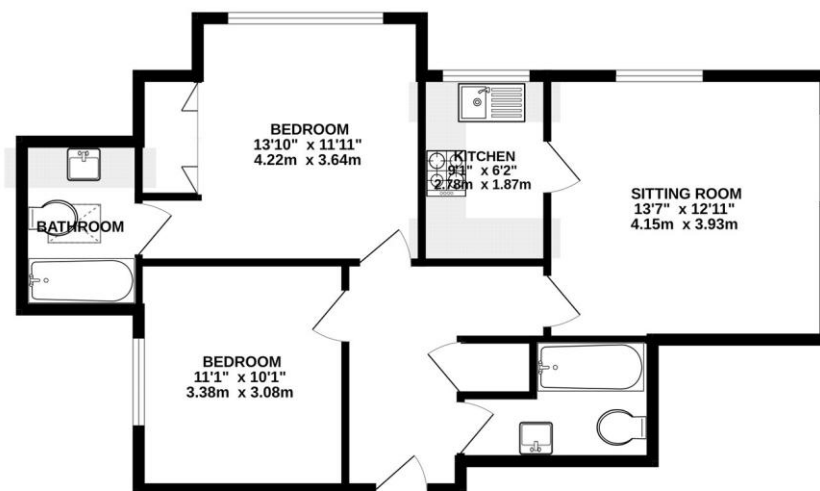
## Outside

Wellesley Gate offers allocated parking and is situated a short walk from the mainline train station and Manor Park Conservation Area.

To view the Material Information Certificate for this property please click [Here](#) or contact us to request a copy

## Floorplan

GROUND FLOOR



Whilst every attempt has been made to ensure the accuracy of the floorplan contained here, measurements of doors, windows, rooms and any other items are approximate and no responsibility is taken for any error, omission or mis-statement. This plan is for illustrative purposes only and should be used as such by any prospective purchaser. The services, systems and appliances shown have not been tested and no guarantee as to their operability or efficiency can be given.  
Made with Metropac C2025



**TO ARRANGE A VIEWING PLEASE CONTACT:**  
Tel: **01252 361550** or Email: **info@bridges.co.uk**



**Important Notice** - These particulars are set out as a general outline only for the guidance of intended purchasers/tenants and do not form part of any offer or contract and must not be relied upon as statements or representations of fact. Purchasers/Tenants must satisfy themselves by inspection or otherwise as to their correctness.