

## Four Bedroom Link-Detached House Hornbeam Place, Hook, Hampshire, RG27 9RD

Price: £550,000

- Four Bedrooms
- Open Plan Kitchen Living
- Versatile Additional Ground Floor Room
- Principal Bedroom with En Suite
- Integral Garage with Electric Door
- Driveway for up to Three Vehicles
- Spacious Rear Garden with BBQ Area
- EPC: C (71)



## Description

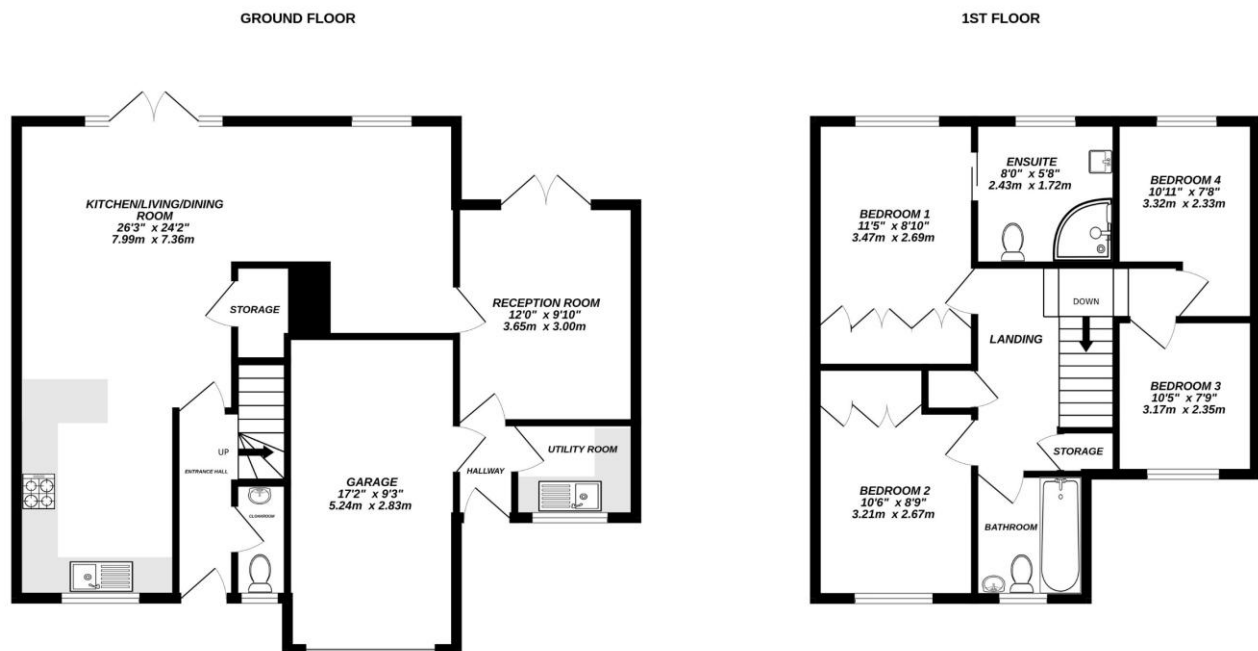
This extended link detached home has been cleverly designed to bring space and flexibility together with modern style. The heart of the house is the impressive open plan kitchen, living and dining area, complete with a recently fitted kitchen and double doors that open directly onto the garden, making it perfect for both everyday family life and entertaining. There is also a versatile additional room that can be used as a playroom, study or even a downstairs bedroom, giving you plenty of options to suit your lifestyle. This links through to a small hallway that leads to the utility room, which already has plumbing in place should you wish to convert it into a wet room. From here there is access into the integral garage as well as an extra door to the front. The welcoming entrance hall provides a cloakroom to the right and stairs to the first floor. Upstairs, the principal bedroom features built-in wardrobes and its own en suite, while the second double also has fitted storage. A further well sized double bedroom and a comfortable single are served by a family bathroom, with useful cupboard space on the landing.

## Outside

Outside, the property offers excellent kerb appeal with a wide driveway for up to three cars and an integral garage fitted with an electric roller door. The rear garden is a real highlight, stretching around the back and side of the home and providing plenty of space for children to play, summer gatherings or simply relaxing in the sun. It even includes a dedicated barbeque area, while side access brings you neatly back around to the front. This is a home that combines practical features with great living spaces, both inside and out.

To view the Material Information Certificate for this property please click [Here](#) or contact us to request a copy.

## Floorplan



Made with Metropix ©2025



TO ARRANGE A VIEWING PLEASE CONTACT:  
Tel: 01256 769999 or Email: [info@bridges.co.uk](mailto:info@bridges.co.uk)



Important Notice - These particulars are set out as a general outline only for the guidance of intended purchasers/tenants and do not form part of any offer or contract and must not be relied upon as statements or representations of fact. Purchasers/Tenants must satisfy themselves by inspection or otherwise as to their correctness.