



Two Bedroom Terraced House

Ayling Court, Farnham, Surrey, GU9 9TF

Price: £335,000

- Two Bedrooms
- Family Bathroom Suite
- Garage
- Private Garden
- Desirable Location
- No Onward Chain
- Parking
- EPC: C (74)



Description

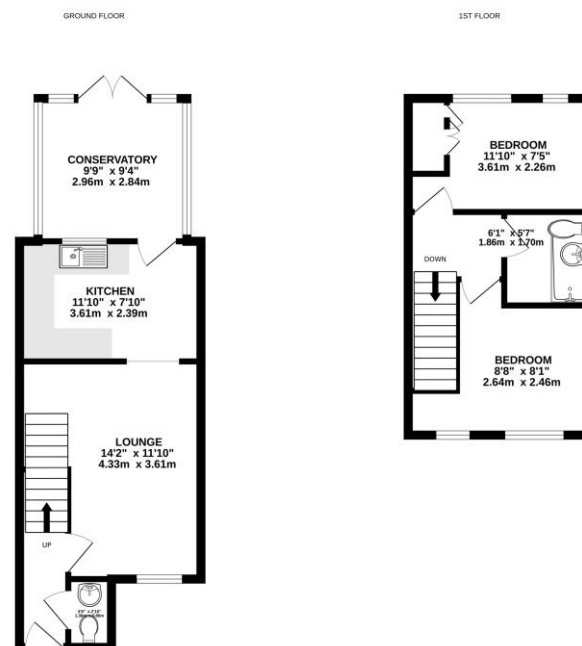
Available to the market, with no onward chain, is this two-bedroom property situated in a pleasant cul-de-sac on the north side of Farnham. The ground floor has a generously sized lounge, a kitchen and a conservatory with double doors opening onto the rear patio. The first floor comprises of two double bedrooms and a well-presented family bathroom suite.

Outside

There is plenty of communal parking for residents to the front and there is also a garage in a nearby block. The rear garden is a generous size and is mostly laid to lawn.

To view the Material Information Certificate for this property please click [Here](#) or contact us to request a copy.

Floorplan



While every effort has been made to ensure the accuracy of the floorplan contained here, measurements of doors, windows, rooms and any other items are approximate and no responsibility is taken for any errors, omissions or mis-statements. This plan is for illustrative purposes only and should be used as a guide only for any prospective purchaser. The services, systems and appliances shown here are not shown tested and no guarantee as to their operability or efficiency can be given.
Drawn with AutoCAD 2012



TO ARRANGE A VIEWING PLEASE CONTACT:
Tel: **01252 361550** or Email: **info@bridges.co.uk**



Important Notice - These particulars are set out as a general outline only for the guidance of intended purchasers/tenants and do not form part of any offer or contract and must not be relied upon as statements or representations of fact. Purchasers/Tenants must satisfy themselves by inspection or otherwise as to their correctness.