



## Two Bedroom Apartment

**Blackmoor Drive, Basingstoke, Hampshire, RG24 9QF**

Price: £245,000

- Two Double Bedrooms
- Two Bathrooms
- Modern
- Allocated Parking
- Integrated Appliances
- Storage
- Built-In Wardrobes
- EPC: B (85)



## Description

A beautifully presented two double bedroom apartment, ideally located in the sought after Gillies Meadow development, built circa 2019. Situated within walking distance of Basingstoke Hospital, this modern apartment also benefits from allocated parking. Upon entering, you are welcomed by a spacious entrance hall featuring built-in storage cupboards. The open plan living area offers generous space for both lounge and dining furniture, complemented by a contemporary fitted kitchen with a range of integrated appliances. Both bedrooms are well proportioned doubles, with the principal bedroom enjoying the added benefit of an en suite shower room. A stylish family bathroom completes the accommodation.

## Outside

The property has one allocated parking space and visitor parking.

This property is conveniently located on the outskirts of Rooksdown on the North western outskirts of the town. Locally there is a doctor's surgery, pharmacy, park, shop and cafe.

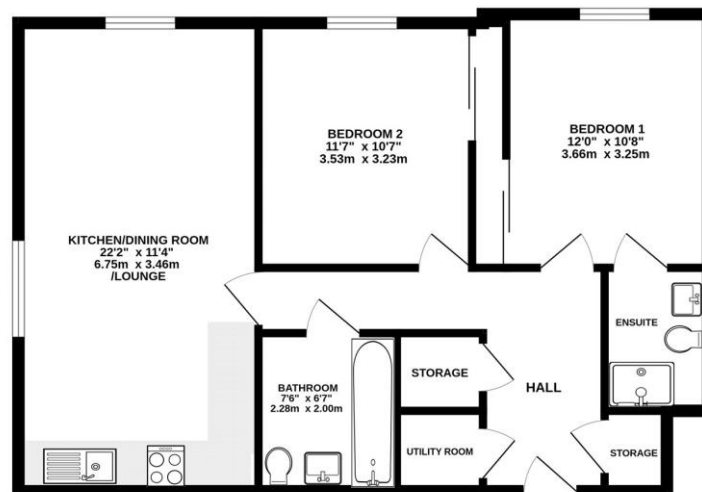
Basingstoke railway station and town centre are approximately a 10 minute drive from the property.

Basingstoke's facilities include cinemas, theatres, a concert hall, museums, sports centres and the shops, bars and restaurants of vibrant Festival Place.

The mainline railway station has frequent services to London (Waterloo from 45 minutes). The wider Basingstoke area has other amenities including an ice rink and ten pin bowling etc. There is access to the M3 motorway at junctions 6 and 7.

## Floorplan

### SECOND FLOOR



While every attempt has been made to ensure the accuracy of the floorplan contained here, measurements of doors, windows, rooms and any other items are approximate and no responsibility is taken for any error, omission or mis-statement. This plan is for illustrative purposes only and should be used as such by any prospective purchaser. The services, systems and appliances shown have not been tested and no guarantee as to their operability or efficiency can be given.  
Made with Metropack C3D2.



**TO ARRANGE A VIEWING PLEASE CONTACT:**  
Tel: **01256 880001** or Email: **info@bridges.co.uk**



**Important Notice - These particulars are set out as a general outline only for the guidance of intended purchasers/tenants and do not form part of any offer or contract and must not be relied upon as statements or representations of fact. Purchasers/Tenants must satisfy themselves by inspection or otherwise as to their correctness.**