



Three Bedroom End of Terrace House Wentworth Close, Farnham, Surrey, GU9 9HH

Price: £450,000

- Three Bedrooms
- End of Terrace House
- No Onward Chain
- Close to Popular Schools
- Beautiful Garden
- Additional Reception Room
- Modern Shower Room
- EPC: D (66)



Description

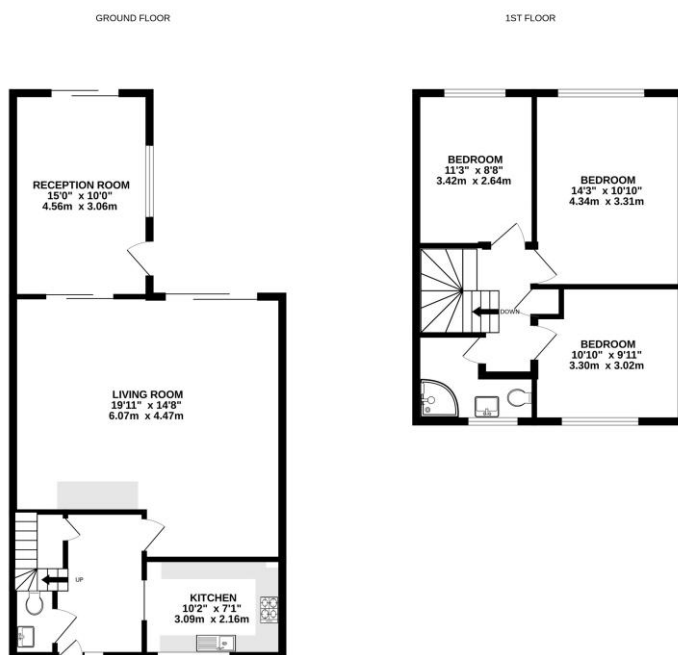
A spacious three-bedroom family home positioned in a highly sought-after cul-de-sac, just moments from Weybourne recreational ground and within walking distance of well-regarded schools. Offered to the market with no onward chain, the property has been extended to provide versatile living space. The ground floor features a front-aspect kitchen with scope to be opened into a kitchen/dining area, a generously sized living room with sliding doors to the rear garden, and a further dual-aspect reception room with its own garden access. A downstairs cloakroom completes the ground floor. Upstairs, there are three well-proportioned bedrooms, with the main bedroom benefiting from built-in storage, and a recently refitted shower room.

Outside

Externally, the property benefits from a garage located in a nearby block. The rear garden is beautifully presented, with a pathway leading to a garden shed at the far end, while side access provides added convenience. The front garden is laid to lawn and offers potential to create a driveway (STPP).

To view the Material Information Certificate for this property please click [Here](#) or contact us to request a copy.

Floorplan



TO ARRANGE A VIEWING PLEASE CONTACT:
Tel: **01252 361550** or Email: **info@bridges.co.uk**



Important Notice - These particulars are set out as a general outline only for the guidance of intended purchasers/tenants and do not form part of any offer or contract and must not be relied upon as statements or representations of fact. Purchasers/Tenants must satisfy themselves by inspection or otherwise as to their correctness.