

Studio Apartment

St. Peters Gardens, Wrecclesham, Farnham, Surrey, GU10 4QY

Price: £150,000

- Ground Floor Studio Apartment
- Allocated Parking
- Private Terrace
- Cul-de-Sac Location
- Long Lease
- Sought-After Area of Farnham
- Estimated Rental Price: £800 pcm
- EPC: TBC



Description

A delightful ground floor studio maisonette, attractively priced to sell. The property offers a spacious bedroom/lounge area, a fitted kitchen, and a bathroom, as well as a useful additional reception room, ideal for storage and neatly tucked away out of sight. Located in the sought-after area of South Farnham, at the end of a peaceful residential cul-de-sac, the maisonette further benefits from a lease of over 950 years and a peppercorn ground rent.

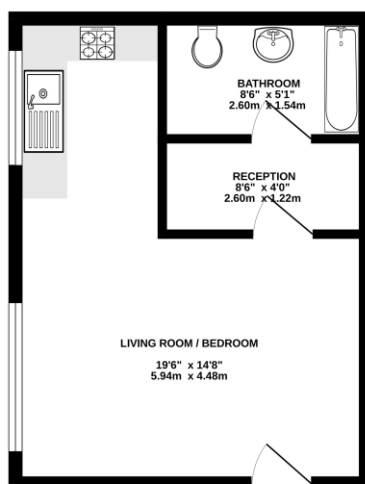
Outside

Externally, the property benefits from an allocated parking space and a small private terrace, offering a pleasant spot to relax outdoors.

To view the Material Information Certificate for this property please click [Here](#) or contact us to request a copy.

Floorplan

GROUND FLOOR



While every effort has been made to ensure the accuracy of the floorplan contained here, measurements of doors, windows, rooms and any other items are approximate and no responsibility is taken for any error, omission or misstatement. This plan is for illustrative purposes only and should be used as a guide only, as to their accuracy or efficiency can be given. Made with Remap 12/20



TO ARRANGE A VIEWING PLEASE CONTACT:
Tel: **01252 361550** or Email: **info@bridges.co.uk**



Important Notice - These particulars are set out as a general outline only for the guidance of intended purchasers/tenants and do not form part of any offer or contract and must not be relied upon as statements or representations of fact. Purchasers/Tenants must satisfy themselves by inspection or otherwise as to their correctness.