



Two Bedroom End of Terrace House

Elizabeth Bree Close, Ash, Surrey, GU12 6FR

Offers Over: £375,000

- Two Bedroom End of Terrace
- New Build
- Two Bathrooms
- Kitchen
- Garden
- Parking
- Close to Local Amenities
- EPC: B (84)



Description

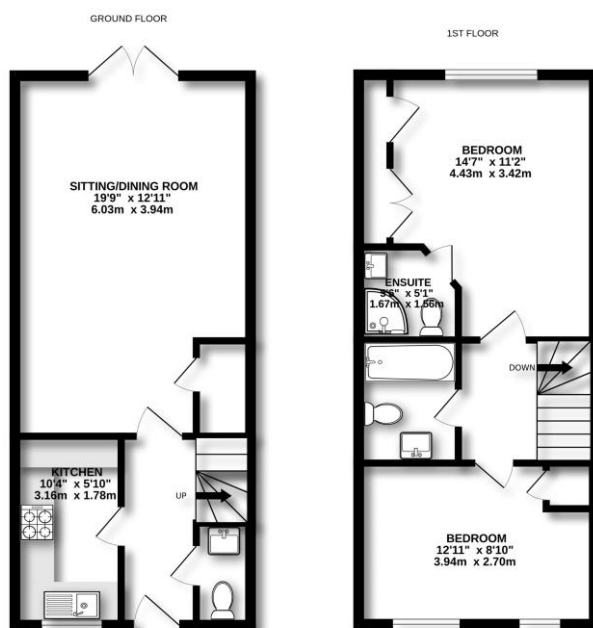
Located in the sought-after Ash Lodge Park development, this modern two-bedroom home was built- in 2020 and still benefits from several years of its 10-year NHBC warranty. Tucked away in a quiet spot with open green views, the property is finished to a high standard. The ground floor includes a welcoming hall with cloakroom, a front-aspect kitchen with integrated SMEG appliances, and a spacious living/dining room opening onto the garden. Upstairs offers two double bedrooms with built-in wardrobes, the principal with en suite, plus a family bathroom and loft access. Outside, there's allocated parking, visitor bays, and a south-facing garden with patio, lawn, and shed. Within walking distance of Ash Station, schools, and shops, and with excellent links to the A331, M3, A3, and A30, this home is ideal for first-time buyers, downsizers, or investors.

Outside

The sunny, south-facing garden features a patio directly off the French doors, ideal for outdoor dining and entertaining. A generous lawn and garden shed complete this low-maintenance outdoor space.

To view the Material Information Certificate for this property please click [Here](#) or contact us to request a copy.

Floorplan



TO ARRANGE A VIEWING PLEASE CONTACT:
Tel: **01252 361550** or Email: **info@bridges.co.uk**



Important Notice - These particulars are set out as a general outline only for the guidance of intended purchasers/tenants and do not form part of any offer or contract and must not be relied upon as statements or representations of fact. Purchasers/Tenants must satisfy themselves by inspection or otherwise as to their correctness.