



Two Bedroom Terraced House

Wright Avenue, Blackwater, Camberley, Hampshire, GU17 9FL

Price: £385,000

- Two Double Bedrooms
- End of Terrace House
- En Suite and Cloakroom
- South Facing Garden
- Two Allocated Parking Spaces
- Popular Development
- Viewings Advised
- EPC: B (85)



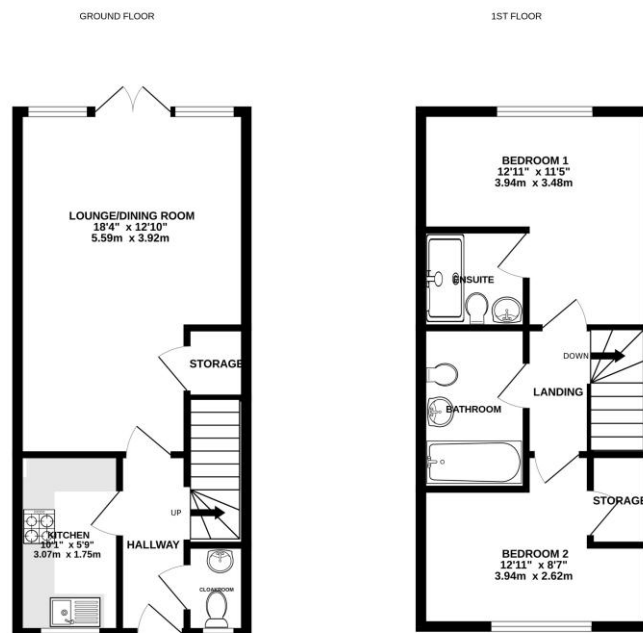
Description

Situated in the sought after Helios Park development in Blackwater stands this well presented two-bedroom home. The property benefits from allocated parking for multiple vehicles and there is rear access leading to the garden. The accommodation comprises a front aspect kitchen, rear aspect living/dining room and cloakroom all to the ground floor. On the first floor you have two double bedrooms, the principal room with an en suite shower room, as well as a family bathroom. An internal inspection is highly recommended to truly appreciate all that this home has to offer.

Outside

The property benefits from a south facing rear garden which is mainly laid to lawn with a patio seating area and rear access to the car park the property comes with two parking spaces and further visitor parking.

Floorplan



Whilst every attempt has been made to ensure the accuracy of the floorplan contained herein, measurements of doors, windows, rooms and any other items are approximate and no responsibility is taken for any error, omission or mis-statement. This plan is for guidance purposes only and should be used as a guide only. The accuracy or efficiency can be given as to their correctness. Made with Hoxpox 2020



TO ARRANGE A VIEWING PLEASE CONTACT:

Tel: 01276 685544 or Email:
camberley@bridges.co.uk



Important Notice - These particulars are set out as a general outline only for the guidance of intended purchasers/tenants and do not form part of any offer or contract and must not be relied upon as statements or representations of fact. Purchasers/Tenants must satisfy themselves by inspection or otherwise as to their correctness.