



One Double Bedroom Apartment

Yeovil Road, Farnborough, Hampshire, GU14 6EX

Guide Price: £170,000

- One Double Bedroom
- First Floor Apartment
- Open Plan Living/Dining
- Modern Bathroom
- Allocated Parking
- Communal Gardens
- Estimated Rental Price: £1,150 pcm
- EPC: C (78)



Description

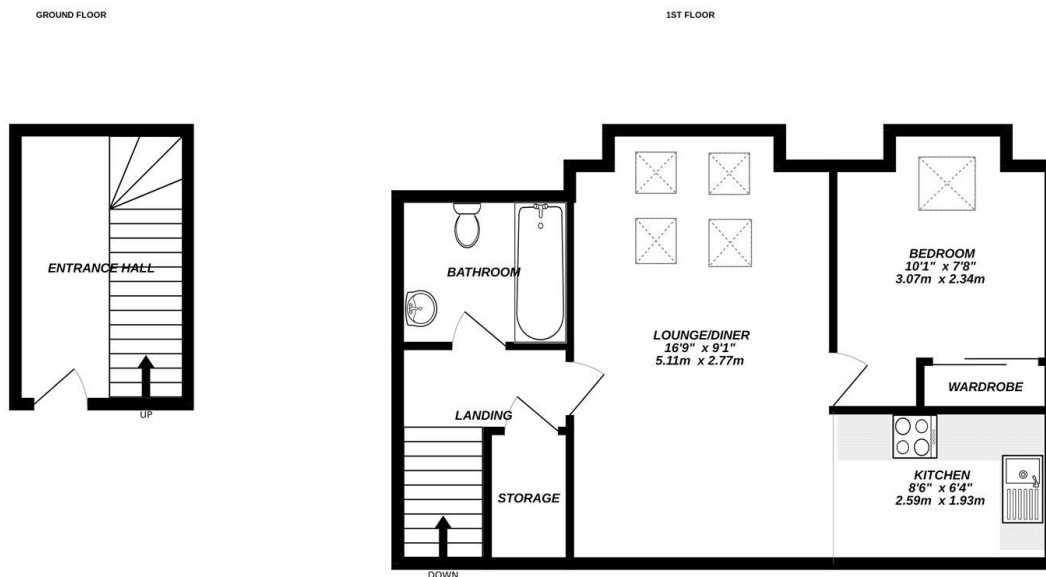
Situated in South Farnborough, just moments from the heart of North Camp Village, is this well-presented one-bedroom second floor apartment. The property features a spacious 16ft+ living area, communal gardens, off street parking, and a long lease. Local amenities, train stations, parks, and major road links are all easily accessible, making this an ideal first-time buy or investment opportunity. Viewings are highly recommended to fully appreciate all this apartment has to offer.

Outside

Outside, the property benefits from a well-maintained communal garden for all residents to enjoy, along with a useful shed providing additional storage. To the front, there is off-street parking for convenience.

To view the Material Information Certificate for this property please click [Here](#) or contact us to request a copy.

Floorplan



Bridges
Made with Metropix ©2025



TO ARRANGE A VIEWING PLEASE CONTACT:
Tel: **01252 361550** or Email: **info@bridges.co.uk**



Important Notice - These particulars are set out as a general outline only for the guidance of intended purchasers/tenants and do not form part of any offer or contract and must not be relied upon as statements or representations of fact. Purchasers/Tenants must satisfy themselves by inspection or otherwise as to their correctness.