



Three Bedroom Terraced House

Foxley Close, Blackwater, Camberley, Hampshire, GU17 0JY

Offers Over: £375,000

- Three Bedrooms
- Terrace House
- Sought-after Foxley Close
- Spacious Lounge
- Smart Patio Area
- Landscaped Rear Garden
- Garage in Block
- EPC: D (64)



Description

Welcome to this delightful three-bedroom terraced home, tucked away in the sought-after Foxley Close in Blackwater. Offering a harmonious blend of comfort, style, and practicality, this property is perfectly suited for families and commuters alike. On entering, you're welcomed into a spacious dining room, creating a warm and inviting setting for relaxation and family time. A separate living room provides the ideal space for entertaining while the modern kitchen is well-appointed with contemporary appliances and generous storage—making it as functional as it is stylish. Upstairs, three well-proportioned bedrooms offer peaceful retreats, all served by a thoughtfully designed family bathroom that combines comfort with practicality. Outside, the rear garden has been attractively landscaped to provide a low-maintenance yet versatile space. A smart patio area is perfect for al fresco dining and entertaining, while the artificial lawn ensures year-round greenery with minimal upkeep. Ideally located close to highly regarded schools, local amenities, and Blackwater train station, this home offers both convenience and community in equal measure.

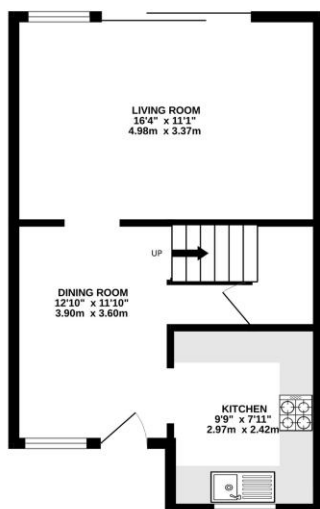
Outside

Externally, the property benefits from an enclosed rear garden with a patio area, there is a garage in the block. The property is conveniently located within easy access to local amenities, great commuter links via the A30/M3, and good local schools.

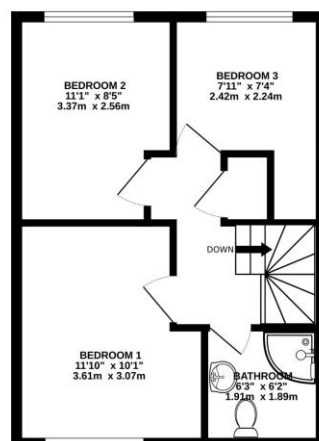
To view the Material Information Certificate for this property please click [Here](#) or contact us to request a copy.

Floorplan

GROUND FLOOR



1ST FLOOR



Whilst every attempt has been made to ensure the accuracy of the floorplan contained here, measurements of doors, windows, rooms and any other items are approximate and no responsibility is taken for any error, omission or mis-statement. This plan is for illustrative purposes only and should be used as such by any prospective purchaser. The services, systems and appliances shown have not been tested and no guarantee as to their operability or efficiency can be given.
Made with Metropack C2025



TO ARRANGE A VIEWING PLEASE CONTACT:

Tel: **01276 685544** or Email:

camberley@bridges.co.uk



Important Notice - These particulars are set out as a general outline only for the guidance of intended purchasers/tenants and do not form part of any offer or contract and must not be relied upon as statements or representations of fact. Purchasers/Tenants must satisfy themselves by inspection or otherwise as to their correctness.