



## Three Bedroom Semi-Detached House

**Oak Tree Close, Aldershot, Hampshire, GU12 4BE**

Price: £415,000

- Three Bedroom Family Home
- No Onward Chain
- Must Be Seen to Be Appreciated
- Driveway Parking and Garage
- Patio and Artificial Lawn in Garden
- Well Regarded Cul-de-Sac
- Beautifully Decorated Throughout
- EPC: D (66)





## Description

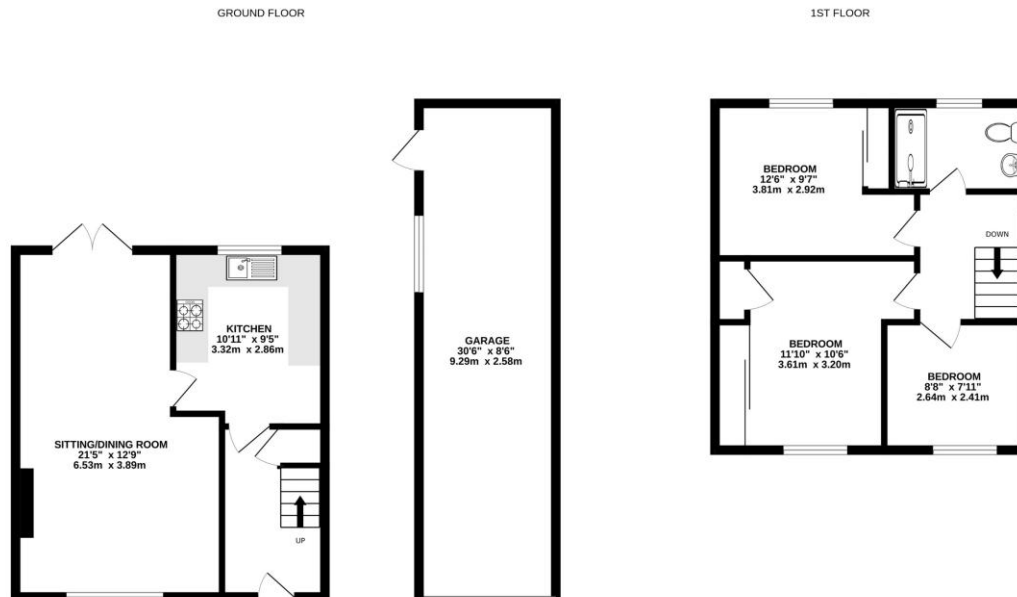
A stunning semi-detached family home, positioned in one of Aldershot's most sought-after locations and offered to the market with NO ONWARD CHAIN. The property is set over two floors with the additional benefits of driveway parking and a garage. The ground floor boasts a welcoming entrance hall with additional understairs storage, to which leads you to the family kitchen. There is then access through to the open living/dining room, which there is patio doors out to the private south facing garden. The first floor offers a main bedroom with a further two bedrooms and a family bathroom. This property is suitable for local home movers as well as first time buyers alike.

## Outside

The property includes driveway parking and a garage, complemented by a sunny south-facing garden that's both low-maintenance and inviting. With an artificial lawn, a generous patio for entertaining, and access via patio doors or a side gate, it's a wonderful space for relaxing or hosting in style.

To view the Material Information Certificate for this property please click [Here](#) or contact us to request a copy.

## Floorplan



Whilst every attempt has been made to ensure the accuracy of the floorplan contained here, measurements of doors, windows, rooms and any other items are approximate and no responsibility is taken for any error, omission or mis-statement. This plan is for illustrative purposes only and should be used as such by any prospective purchaser. The services, systems and appliances shown have not been tested and no guarantee as to their operability or efficiency can be given.  
Made with Metropix 5/2025



TO ARRANGE A VIEWING PLEASE CONTACT:  
Tel: 01252 361550 or Email: [info@bridges.co.uk](mailto:info@bridges.co.uk)



Important Notice - These particulars are set out as a general outline only for the guidance of intended purchasers/tenants and do not form part of any offer or contract and must not be relied upon as statements or representations of fact. Purchasers/Tenants must satisfy themselves by inspection or otherwise as to their correctness.