



## Three Bedroom Semi-Detached House

**Chaffers Close, Long Sutton, Hook, Hampshire, RG29 1SY**

**Price: £545,000**

- Three Well Proportioned Bedrooms
- Rarely Available Semi-Detached Family Home
- Spacious Living Room with Versatile Layout
- Bright Conservatory Overlooking Private Garden
- Stylish Modern Kitchen and Bathroom
- Driveway Parking for Two Cars
- Highly Sought After Long Sutton Location
- EPC: D (57)





## Description

Rarely available, this three bedroom semi-detached home enjoys a prime position in the highly sought after village of Long Sutton. Tucked away in a peaceful cul-de-sac, the property offers a blend of modern comfort and village charm that is hard to come by. Inside, the generous living room provides a welcoming hub for family life, while to the rear a spacious conservatory creates a bright and versatile area that opens directly onto the garden. The kitchen is well presented and practical in design, complemented by a separate utility room that helps keep everything organised. A downstairs cloakroom adds further convenience, while upstairs the three bedrooms are all well proportioned and served by a stylish family bathroom finished to a contemporary standard.

## Outside

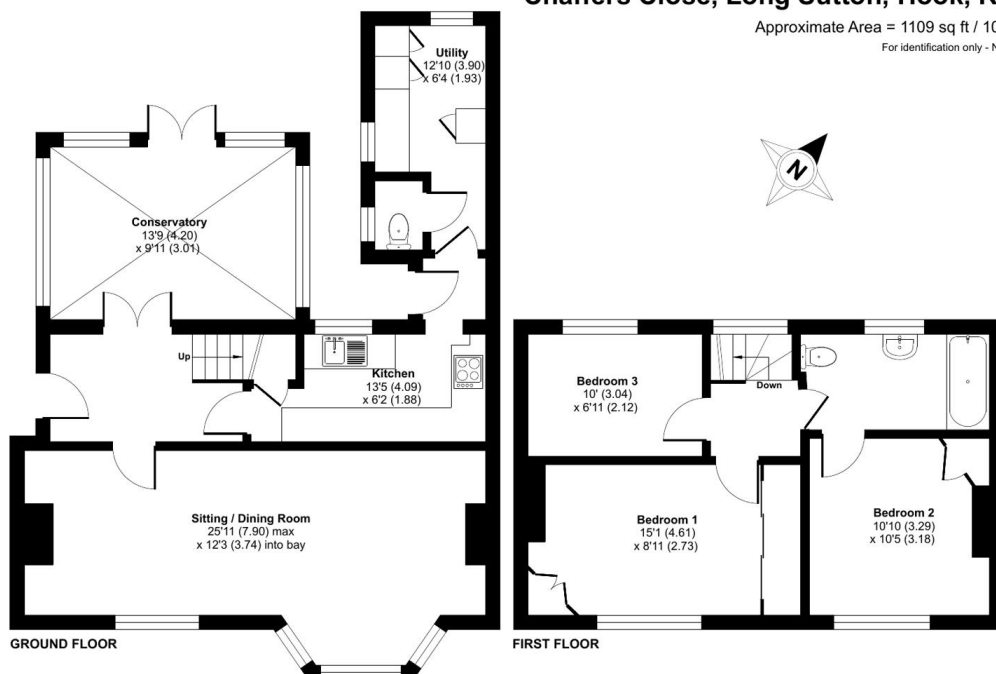
The rear garden is a standout feature, beautifully maintained and offering both privacy and tranquillity. To the front, a driveway provides off road parking for two vehicles, adding to the home's day to day practicality. The location is equally impressive: Long Sutton is one of Hampshire's most picturesque villages, with its duck pond, historic church, and green surrounded by character properties. The community here is strong and welcoming, with a popular primary school and village hall at its heart. For wider amenities, the historic market town of Odiham is only a short drive away, while Farnham and Basingstoke provide excellent shopping, dining, and transport links, including direct rail services into London. This is a home that combines the charm of village living with convenience and accessibility, making it a truly rare find.

To view the Material Information Certificate for this property please click [Here](#) or contact us to request a copy

## Floorplan

### Chaffers Close, Long Sutton, Hook, RG29

Approximate Area = 1109 sq ft / 103 sq m  
For identification only - Not to scale



Floor plan produced in accordance with RICS Property Measurement 2nd Edition, incorporating International Property Measurement Standards (IPMS2 Residential). © nitchcom 2025. Produced for Bridges Estate Agents. REF: 1350915

**Bridges**  
Estate Agents

**Bridges**

TO ARRANGE A VIEWING PLEASE CONTACT:  
Tel: **01256 769999** or Email: **info@bridges.co.uk**



Important Notice - These particulars are set out as a general outline only for the guidance of intended purchasers/tenants and do not form part of any offer or contract and must not be relied upon as statements or representations of fact. Purchasers/Tenants must satisfy themselves by inspection or otherwise as to their correctness.