



Two Bedroom Apartment

Victoria Street, Basingstoke, Hampshire, RG21 3FJ

Price: £210,000

- Two Bedrooms
- Town Centre Location
- Close to Train Station
- Allocated Underground Parking
- Modern
- Local Amenities
- Modern Bathroom
- EPC: E (46)



Description

This well presented ground floor apartment offers generous living space, two double bedrooms, and allocated secure under croft parking, all within easy reach of Basingstoke town centre.

Accessed via a central entrance with an intercom security system, the property opens into a welcoming hallway with doors leading to the spacious main living area, both bedrooms, the family bathroom, and an airing cupboard.

At the heart of the home is a bright and spacious open plan kitchen/living area. The modern kitchen features sleek high gloss units and integrated appliances, with plenty of room for a dining table and chairs. Three good sized windows give the space natural light

Off the living area is bedroom two, which benefits from dual aspect windows and offers flexibility as a guest room, nursery, or home office. Bedroom one is a generous double with two built-in wardrobes, while the stylish family bathroom includes a contemporary suite with a shower over the bath, complemented by fully tiled walls and flooring.

Outside

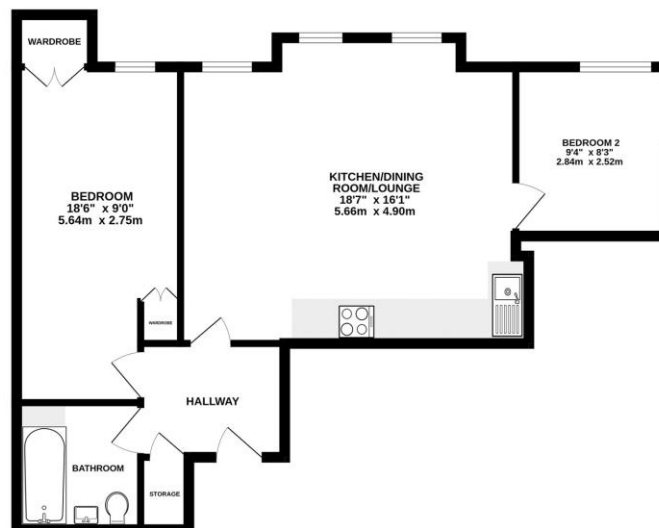
Another key benefit of this property is the secure under croft parking, providing off street parking for one vehicle. For households with more than one car, a paid on street parking permit is also available for an additional vehicle.

Situated close to the vibrant Basingstoke town centre, the apartment enjoys easy access to a wide range of leisure and retail facilities. The town also offers excellent transport links, with a mainline railway station providing direct services to London Waterloo, and convenient access to the M3 motorway connecting to London and the south coast. For those seeking green spaces and countryside escapes, the picturesque Hampshire countryside is just a short drive away.

To view the Material Information Certificate for this property please click [Here](#) or contact us to request a copy

Floorplan

GROUND FLOOR



While every attempt has been made to ensure the accuracy of the floorplan contained herein, measurements of plots, windows, doors and any other items are approximate and no responsibility is taken for any error, omission or mis-statement. This plan is for illustrative purposes only and should be used as such by any prospective purchaser. The services, fixtures and appliances shown have not been tested and no guarantee as to their quantity or efficiency can be given. Made with Metaphor CDS2



TO ARRANGE A VIEWING PLEASE CONTACT:
Tel: **01256 880001** or Email: **info@bridges.co.uk**



Important Notice - These particulars are set out as a general outline only for the guidance of intended purchasers/tenants and do not form part of any offer or contract and must not be relied upon as statements or representations of fact. Purchasers/Tenants must satisfy themselves by inspection or otherwise as to their correctness.