



Two Bedroom Maisonette

Patricia Close, Wellesley, Aldershot, Hampshire, GU11 4GG

Guide Price: £350,000

- Two Bedrooms
- Two Bathrooms
- Two Allocated Parking Spaces
- Sold with No Onward Chain
- Sought After Location in Aldershot
- Ground Floor with Access onto Communal Gardens
- 10 Year Warranty on Appliances Throughout
- EPC: C (78)



Description

Welcome to Gun Hill, a luxury development in Wellesley, combining character and modern living. This ground floor maisonette is offered to the market with no onward chain and benefits from its own private access onto the communal grounds of Gun Hill, making it suitable for all buyers. Step into a bright hallway via your private entrance. At the rear of the property is a contemporary open plan living area, perfect for both relaxation and entertaining. The fully equipped kitchen features integrated appliances and elegant quartz worktops, combining style with practicality. Private doors open onto the communal grounds of Gun Hill, allowing fresh air to flow through the home. The luxury bathrooms are fitted with the latest smart technology and include vanity units with built-in storage for added convenience. The principal bedroom features stylish fitted wardrobes, maximizing both storage and space, along with an en suite. Additionally, the maisonette benefits from high-quality flooring throughout, ensuring modern comfort in every detail.

Outside

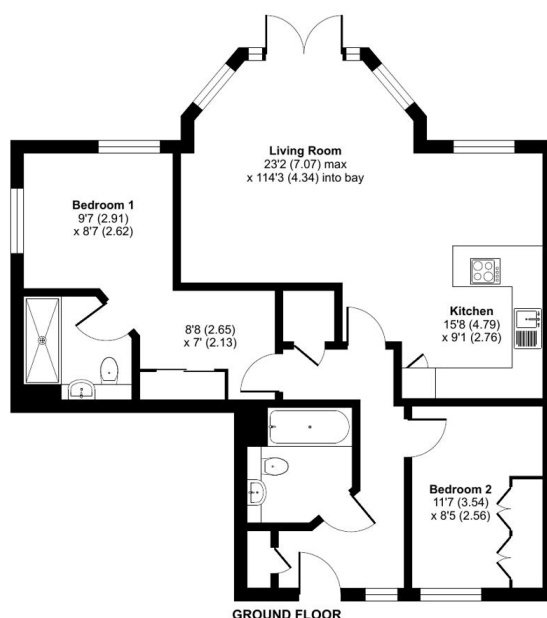
The property is positioned in a peaceful, secluded section of Gun Hill, providing full privacy throughout the day. The property comprises a private entrance as well as doors from the living room heading onto the grounds of Gun Hill. There are two allocated parking spaces for the property as well as numerous visitor parking spaces.

To view the Material Information Certificate for this property please click [Here](#) or contact us to request a copy.

Floorplan

Patricia Close, Wellesley, Aldershot, GU11

Approximate Area = 823 sq ft / 76.4 sq m
For identification only - Not to scale



GROUND FLOOR

Floor plan produced in accordance with RICS Property Measurement 2nd Edition, incorporating International Property Measurement Standards (IPMS2 Residential). © nrichcom 2025. Produced for Bridges Estate Agents. REF: 1355842

Bridges
Estate Agents

Bridges

TO ARRANGE A VIEWING PLEASE CONTACT:
Tel: **01252 361550** or Email: **info@bridges.co.uk**



Important Notice - These particulars are set out as a general outline only for the guidance of intended purchasers/tenants and do not form part of any offer or contract and must not be relied upon as statements or representations of fact. Purchasers/Tenants must satisfy themselves by inspection or otherwise as to their correctness.