

## One Bedroom Apartment

**Redshank Crescent, Chineham, Basingstoke, Hampshire, RG24 8HT**

**Price: £210,000**

- One Double Bedroom with Built-In Wardrobes
- Spacious Entrance Hallway with Loft Hatch
- 18'2" Living Room
- Modern Kitchen with Built-In Appliances
- Allocated Parking and Bike Storage
- No Onward Chain
- Generous Storage
- EPC: B (84)



## Description

Located in the highly sought after Vyne Park development, this immaculate one bedroom apartment offers modern living in a peaceful, green setting, unusual for a new build area. Surrounded by detached homes and set back from the road, it enjoys a pleasant outlook over trees, allocated parking, and ample visitor spaces.

Inside, the spacious dual aspect living room is filled with natural light. The modern kitchen features integrated appliances, and the stylish bathroom is well maintained. A standout feature is the generous storage, including two good sized cupboards in the hallway and built-in wardrobes in the bedroom, rare for a property of this type.

Ideal for first time buyers or investors, this home is offered with no onward chain, and we'd love to show you around.

## Outside

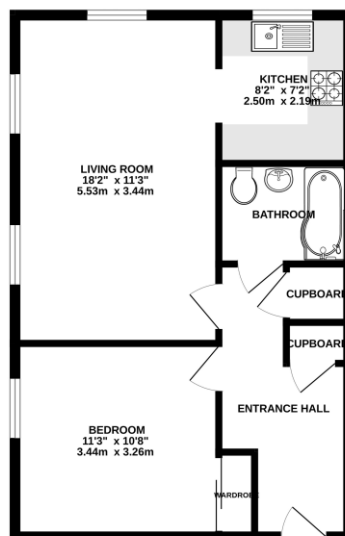
This property enjoys a private position overlooking a wooded copse within the landscaped Vyne Park development in Chineham. Located northeast of Basingstoke, the area offers excellent road links to Basingstoke, Reading, the M3, and M4. Basingstoke town centre is under 4 miles away, with Festival Place shopping centre and a mainline train to London Waterloo in under 45 minutes.

Local amenities include a community centre, coffee shop, eateries, supermarket, and library. A village hall, pub, medical practices, and regular bus services are within walking distance. Well regarded schools such as Great Binfields Primary and Sherfield School are nearby, along with attractions like Wellington Country Park.

To view the Material Information Certificate for this property please click [Here](#) or contact us to request a copy

## Floorplan

FIRST FLOOR



Whilst every attempt has been made to ensure the accuracy of the floorplan contained here, measurements of doors, windows, rooms and any other items are approximate and no responsibility is taken for any error, omission or misstatement. This plan is for illustrative purposes only and should be used as a guide only by the prospective purchaser. The services, equipment and appliances shown here are for information only and no guarantee is given as to their operability or efficiency can be given. Made with Hogen 12/22



**TO ARRANGE A VIEWING PLEASE CONTACT:**  
Tel: **01256 880001** or Email: **info@bridges.co.uk**



**Important Notice -** These particulars are set out as a general outline only for the guidance of intended purchasers/tenants and do not form part of any offer or contract and must not be relied upon as statements or representations of fact. Purchasers/Tenants must satisfy themselves by inspection or otherwise as to their correctness.