



Two Bedroom Ground Floor Maisonette

Attfield Close, Ash, Surrey, GU12 6PX

Guide Price: £210,000

- Two Bedroom Ground Floor Maisonette
- No chain
- Private Rear Garden
- Low Charges
- Quiet Location
- Close to Schools and Amenities
- A Fantastic Opportunity to Make Your Own
- EPC: C (74)



Description

Located on a quiet, no through road and within walking distance of local amenities and the rail station, this spacious two double bedroom ground floor maisonette also benefits from a generous private garden. With low annual charges, the property presents an excellent opportunity to put your own personal stamp on your home and is offered to the market with no onward chain. The maisonette comprises a spacious living room, two double bedrooms, a bathroom, and a kitchen with access to the garden.

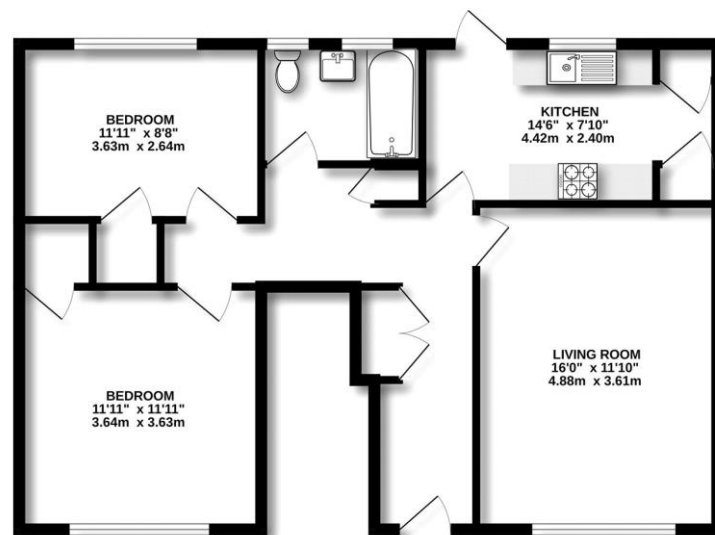
Outside

Outside, the property boasts a superb private rear garden, fully enclosed and with direct access from the rear kitchen door.

To view the Material Information Certificate for this property please click [Here](#) or contact us to request a copy.

Floorplan

GROUND FLOOR



Measurements are approximate. Not to scale. Illustrative purposes only.
Made with Blueprints 12/2015



TO ARRANGE A VIEWING PLEASE CONTACT:
Tel: **01252 361550** or Email: **info@bridges.co.uk**



Important Notice - These particulars are set out as a general outline only for the guidance of intended purchasers/tenants and do not form part of any offer or contract and must not be relied upon as statements or representations of fact. Purchasers/Tenants must satisfy themselves by inspection or otherwise as to their correctness.