



## Three Bedroom Detached House

**The Close, Sandhurst, Berkshire, GU47 0RE**

Price: £500,000

- Three Bedroom Detached House
- Beautiful Garden
- Bathroom and En Suite
- Spacious Conservatory
- Garage and Driveway Parking
- Easy Access to M4
- Close to Local Amenities and Excellent Schools
- EPC: D (67)





## Description

Located in a sought after area near top schools and major motorway links, this three bedroom detached home offers fantastic potential to create a modern family space.

The ground floor features a welcoming entrance, a spacious living room, and a spacious conservatory that fills the home with natural light. The fitted kitchen offers scope for conversion into a stylish open plan kitchen/diner, ideal for family life and entertaining. A downstairs bathroom and access to the integral garage add further convenience.

Upstairs, there are three well proportioned bedrooms, including a principal with en suite, plus a family bathroom serving the remaining rooms, perfect for growing families.

Outside, the home sits on a generous plot with a spacious, private garden ideal for entertaining or relaxing. Ample driveway parking and a garage complete the picture.

With excellent transport links, local amenities, and great schools nearby, this is a prime opportunity to create your dream home in a fantastic location.

## Outside

Set on a generous plot, this property boasts a beautifully maintained garden, perfect for outdoor dining, entertaining, or relaxing in privacy. Mature shrubs and lawn areas provide a lovely backdrop, with great potential for landscaping or extending (subject to planning).

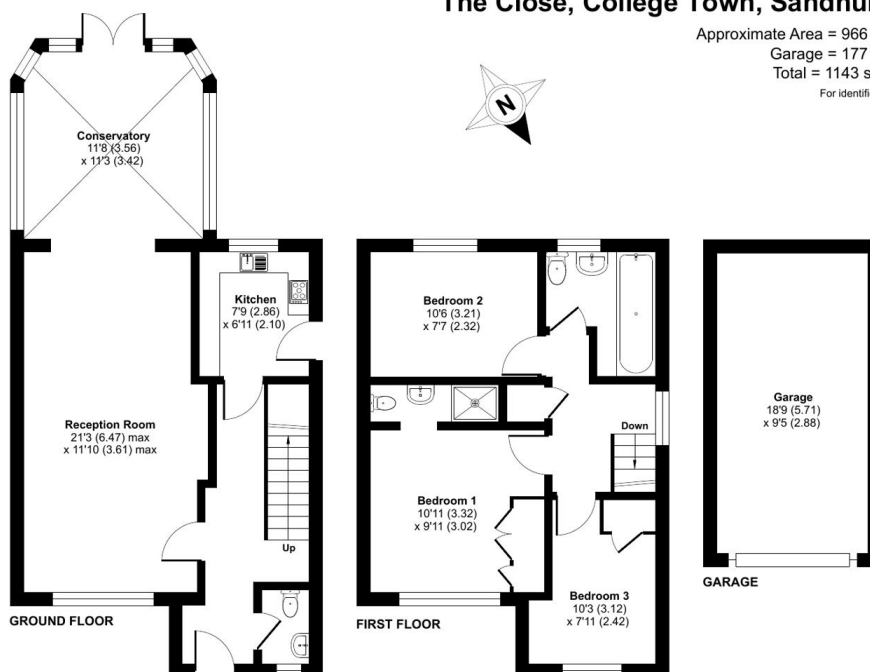
At the front, a spacious driveway offers ample off road parking and leads to an integral garage for added convenience and security. The wide frontage and attractive setting give the home strong kerb appeal, making it ideal for families or buyers seeking both practicality and charm.

To view the Material Information Certificate for this property please click [Here](#) or contact us to request a copy

## Floorplan

### The Close, College Town, Sandhurst, GU47

Approximate Area = 966 sq ft / 89.7 sq m  
Garage = 177 sq ft / 16.4 sq m  
Total = 1143 sq ft / 106.1 sq m  
For identification only - Not to scale



Floor plan produced in accordance with RICS Property Measurement 2nd Edition, incorporating International Property Measurement Standards (IPMS2 Residential). © nitchecom 2025. Produced for Bridges Estate Agents. REF: 1354645

**Bridges**  
Estate Agents

**Bridges**

TO ARRANGE A VIEWING PLEASE CONTACT:

Tel: **01344 962150** or Email:



Important Notice - These particulars are set out as a general outline only for the guidance of intended purchasers/tenants and do not form part of any offer or contract and must not be relied upon as statements or representations of fact. Purchasers/Tenants must satisfy themselves by inspection or otherwise as to their correctness.