

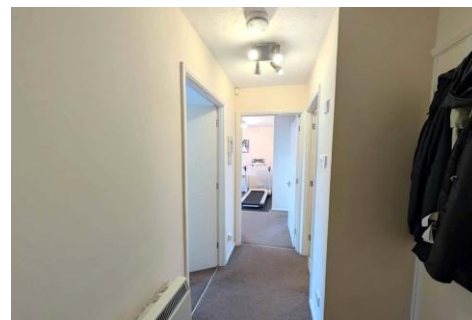
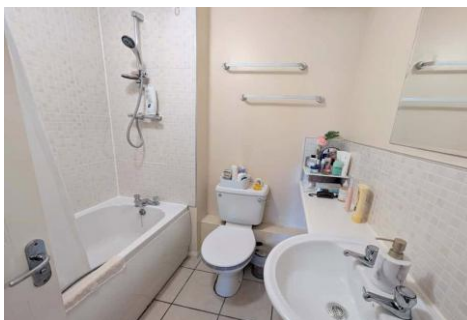


Two Bedroom Apartment

Cody Close, Ash Vale, Surrey, GU12 5SJ

Price: £190,000

- Two Double Bedrooms
- Second Floor Apartment
- No Chain
- Plenty of Parking
- Allocated and Visitor Parking
- Close to Local Amenities
- Peaceful Location
- EPC: C (69)



Description

Located within the highly sought after Old Farm Place development in Ash Vale, this beautifully presented two bedroom top floor flat combines modern living with a convenient location.

The property boasts a bright and spacious living/dining room, a well-appointed kitchen with ample storage, and a contemporary family bathroom. Both bedrooms are generous doubles, offering comfortable and versatile accommodation.

Externally, residents benefit from an allocated parking space along with ample visitor parking to the front of the property. Perfectly positioned, Old Farm Place is within walking distance of local amenities and enjoys excellent transport links, with easy access to both the A3 and M3.

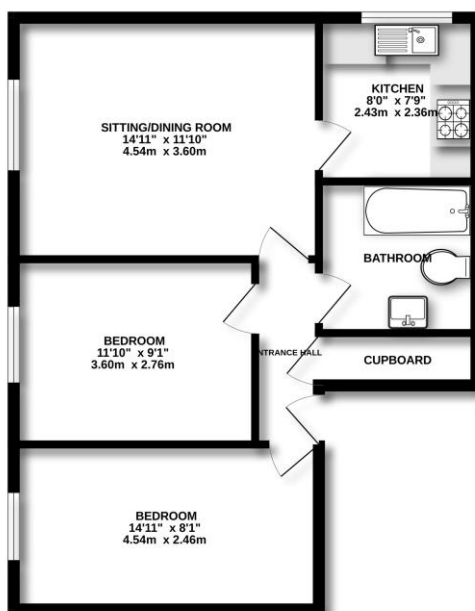
Outside

Externally, the property offers communal gardens as well as allocated and visitors parking.

To view the Material Information Certificate for this property please click [Here](#) or contact us to request a copy.

Floorplan

SECOND FLOOR



Measurements are approximate. Not to scale. Illustrative purposes only. Made with Metropix ©2025



TO ARRANGE A VIEWING PLEASE CONTACT:
Tel: **01252 361550** or Email: **info@bridges.co.uk**



Important Notice - These particulars are set out as a general outline only for the guidance of intended purchasers/tenants and do not form part of any offer or contract and must not be relied upon as statements or representations of fact. Purchasers/Tenants must satisfy themselves by inspection or otherwise as to their correctness.