



Four Bedroom Detached House

Larkspur Close, Aldershot, Hampshire, GU11 3QP

Price: £650,000

- Four Bedroom
- Detached Family Home
- Cul-de-Sac Location
- Driveway Parking and Double Garage
- Tastefully Decorated Throughout
- Outdoor Garden Office/Bar
- Family Bathroom and Downstairs Cloakroom
- EPC: D (61)



Description

Bridges are delighted to present to the market this unique four-bedroom detached family home, discreetly positioned within a quiet cul-de-sac. Properties in Larkspur Close rarely come to market, with the last sale agreed in 2007, making this a truly exceptional opportunity. The property has been thoughtfully enhanced over the years, most notably with a dining room extension that has created a superb open plan kitchen, dining and living space, perfectly designed for modern family living. The ground floor also offers a welcoming living room, a versatile snug, and a cloakroom, all complementing the flow of the home. Upstairs, there are four well-proportioned bedrooms, three of which are generous doubles, along with a modern family bathroom. Additional features include ample storage throughout, driveway parking for multiple vehicles and a bespoke garden bar or office, ideal for entertaining or working from home. This outstanding home combines practicality with charm and must be viewed to be fully appreciated.

Outside

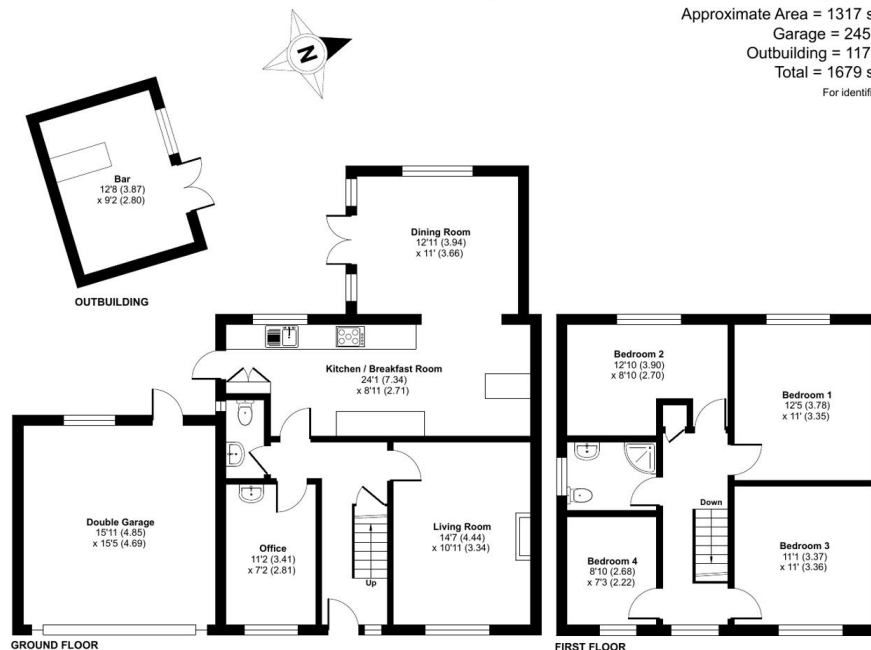
The property is positioned in a quiet cul-de-sac on the fringes of Farnham and benefits from driveway parking for several vehicles. Side access on both sides of the home leads to the rear garden, which is mainly laid to lawn and enjoys a private, enclosed setting. A stylish garden office and bar is located to one side, providing the perfect space for entertaining or working from home.

To view the Material Information Certificate for this property please click [Here](#) or contact us to request a copy.

Floorplan

Larkspur Close, Aldershot, Hampshire, GU11

Approximate Area = 1317 sq ft / 122.3 sq m
Garage = 245 sq ft / 22.7 sq m
Outbuilding = 117 sq ft / 10.8 sq m
Total = 1679 sq ft / 155.8 sq m
For identification only - Not to scale



Floor plan produced in accordance with RICS Property Measurement 2nd Edition, incorporating International Property Measurement Standards (IPMS2 Residential). © nrichcom 2025. Produced for Bridges Estate Agents. REF: 1359136



TO ARRANGE A VIEWING PLEASE CONTACT:
Tel: **01252 361550** or Email: **info@bridges.co.uk**



Important Notice - These particulars are set out as a general outline only for the guidance of intended purchasers/tenants and do not form part of any offer or contract and must not be relied upon as statements or representations of fact. Purchasers/Tenants must satisfy themselves by inspection or otherwise as to their correctness.