



Three Bedroom End of Terrace House

Derry Close, Ash Vale, Surrey, GU12 5SR

Price: £415,000

- Three Bedroom End of Terrace House
- Garage and Off Road Parking
- Cul-de-Sac Location
- Modern Kitchen/Diner
- New Double Glazed Windows and External Doors
- New Bosch Boiler
- Quiet Location in Old Farm
- EPC: D (63)



Description

This well presented three bedroom end of terrace home offers stylish, contemporary living in a peaceful cul-de-sac close to sought after schools. At its heart is a recently installed high spec kitchen/dining room with integrated appliances, Bosch boiler, and Hive smart heating. Newly fitted patio doors lead to an attractive east-facing garden with lawn, patio seating, and side access plus potential for direct garage entry.

The spacious living room is bright and welcoming, complemented by a refitted cloakroom. Upstairs, the principal bedroom features a built-in wardrobe and modern en-suite, alongside a second double bedroom, a single bedroom, and a sleek family bathroom.

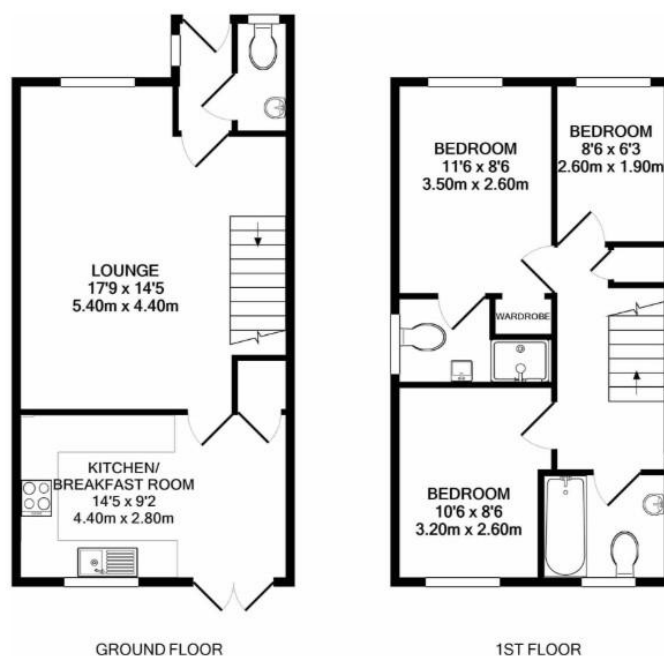
Additional highlights include off-street parking and a garage.

Outside

This outdoor space includes a patio seating area, a lawn, well stocked flower beds, and a side access gate. There is also scope to create direct access from the garden into the garage.

To view the Material Information Certificate for this property please click [Here](#) or contact us to request a copy.

Floorplan



TO ARRANGE A VIEWING PLEASE CONTACT:
Tel: **01252 361550** or Email: **info@bridges.co.uk**



Important Notice - These particulars are set out as a general outline only for the guidance of intended purchasers/tenants and do not form part of any offer or contract and must not be relied upon as statements or representations of fact. Purchasers/Tenants must satisfy themselves by inspection or otherwise as to their correctness.