



TYLNEY LANE | NEWNHAM


**Platinum
Homes**
BY BRIDGES



The Property

Woodside is situated in the picturesque village of Newnham. This exceptional home is approached via a gravel driveway with ample parking and a detached garage.

Inside, the property combines modern refinements with period charm, featuring an impressive main reception room with a double-sided wood burner, an adjoining dining room, and an oak-framed orangery opening out to the garden.

The kitchen/breakfast room is fitted with bespoke cabinetry and integrated appliances, supported by a practical utility/boot room. A study with fitted units, a family room, and a stylish cloakroom complete the ground floor.

Upstairs, the principal suite includes a re-fitted shower room and dressing area, alongside three further bedrooms and a contemporary family bathroom.



Outside

The gardens are a true highlight, with landscaped front and rear lawns, colourful borders, and mature trees.

A paved terrace enjoys sweeping views across open meadows, offering the perfect spot to relax and entertain.



Features

- Four Bedrooms
- Detached Character Cottage
- En Suite to Bedroom One
- Ample Driveway Parking
- Garage/Workshop
- Views Over the Meadow
- Village Location
- EPC: D (60)
- Council Tax Band: G

Contact

Philip Gascoyne

pgascoyne@platinumbybridges.co.uk

01252 975501


**Platinum
Homes**
BY BRIDGES



Tylney Lane, Newnham, Hook, RG27

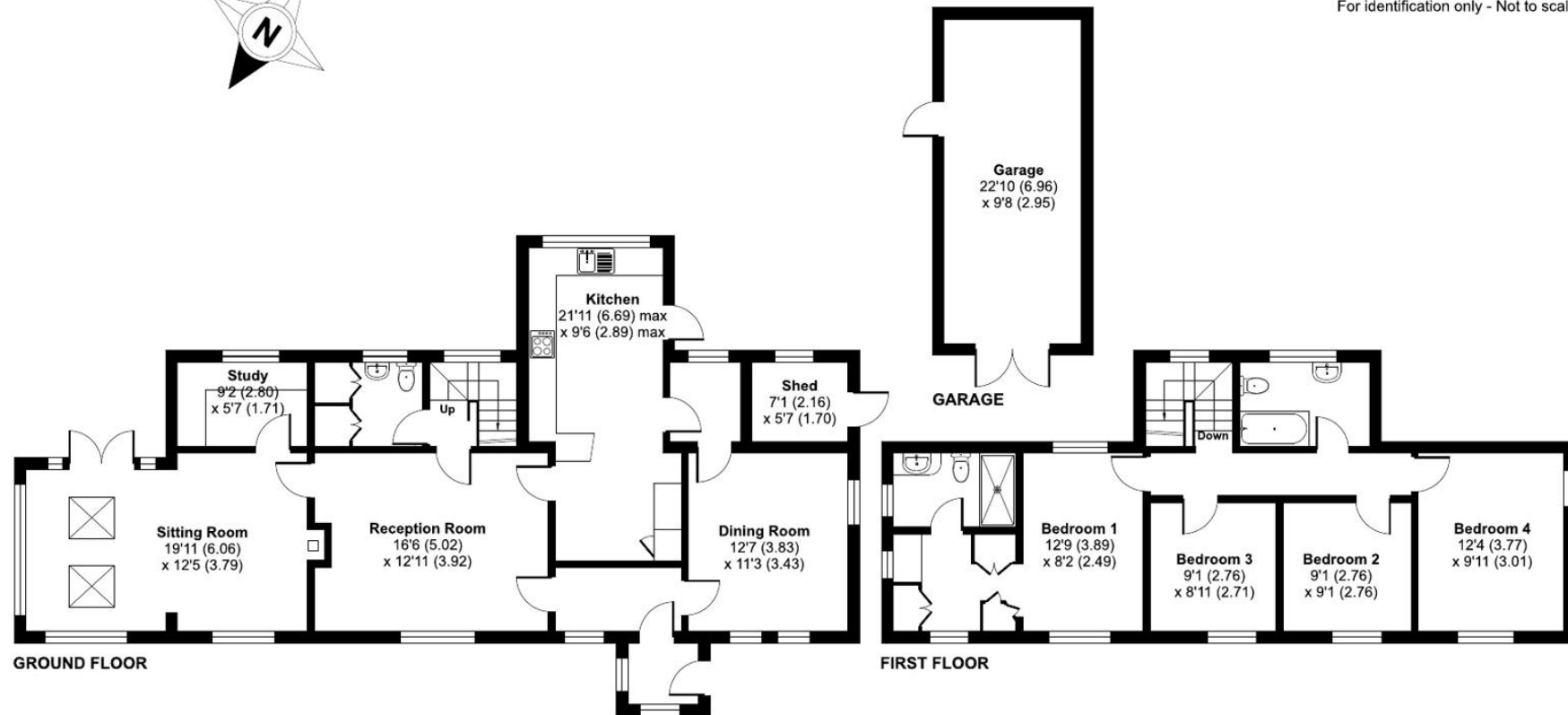
Approximate Area = 1765 sq ft / 163.9 sq m

Garage = 221 sq ft / 20.5 sq m

Outbuilding = 38 sq ft / 3.5 sq m

Total = 2024 sq ft / 187.9 sq m

For identification only - Not to scale



Floor plan produced in accordance with RICS Property Measurement Standards incorporating International Property Measurement Standards (IPMS2 Residential). © nitchcom 2024.
Produced for Bridges Estate Agents Ltd (Platinum Homes). REF: 1088477

**Platinum
Homes**
BY BRIDGES

Important Notice - These particulars are set out as a general outline only for the guidance of intended purchasers and do not form part of any offer or contract and must not be relied upon as statements or representations of fact. Purchasers must satisfy themselves by inspection or otherwise as to their correctness.

