

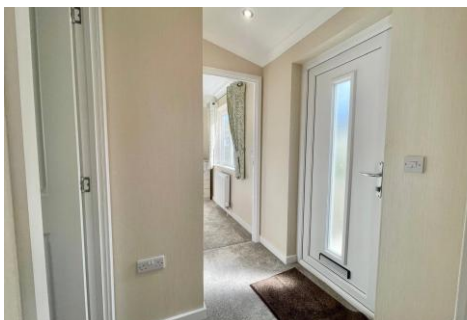


One Double Bedroom Park Home

Mytchett Farm Park, Mytchett Road, Mytchett, Camberley, GU16

Price: £180,000

- One Double Bedroom Park Home
- Popular Mytchett Farm Park
- Exclusively for the Over 45's
- Fully Furnished & Appliances
- 10 year Gold Shield Build Warranty
- Driveway and Garden
- Gas Central Heating and Double Glazing
- EPC: TBC



Description

Tucked away within the popular Mytchett Farm Park, which caters exclusively for the over-45s, is this brand new, spacious one double bedroom Park Home (38ft x 13ft). Designed and built by Omar to the highly regarded Regency specification, the home offers stylish, modern living with the reassurance of a 10-year gold shield warranty. Features include gas radiator heating, double glazing, built-in appliances, and fitted bedroom furniture. The bright multi-aspect living room enjoys a feature fireplace, while the kitchen/dining room provides excellent storage with ample cupboards. A contemporary shower room, wrap-around pathway and garden, driveway plus residents' parking, and tasteful included furniture all add to the appeal. Delivering spacious and affordable living in a welcoming community setting, this property is a fantastic choice for buyers seeking comfort and convenience.

Outside

Externally, the property benefits from driveway parking, a generous and private garden, and a useful storage shed.

To view the Material Information Certificate for this property please click [Here](#) or contact us to request a copy.

Floorplan



01/20/2021
Made with MapTools 02/02/2021



TO ARRANGE A VIEWING PLEASE CONTACT:
Tel: **01252 361550** or Email: **info@bridges.co.uk**



Important Notice - These particulars are set out as a general outline only for the guidance of intended purchasers/tenants and do not form part of any offer or contract and must not be relied upon as statements or representations of fact. Purchasers/Tenants must satisfy themselves by inspection or otherwise as to their correctness.