



## Four Bedroom Detached House

**Rideway Close, Camberley, Surrey, GU15 2NX**

Guide Price: £525,000

- Four Bedrooms
- Detached Family Home
- Beautiful Front and Rear Gardens
- Driveway Parking
- Detached Garage
- Cul-de-Sac Location
- Close to Camberley Town Centre
- EPC: C (72)





## Description

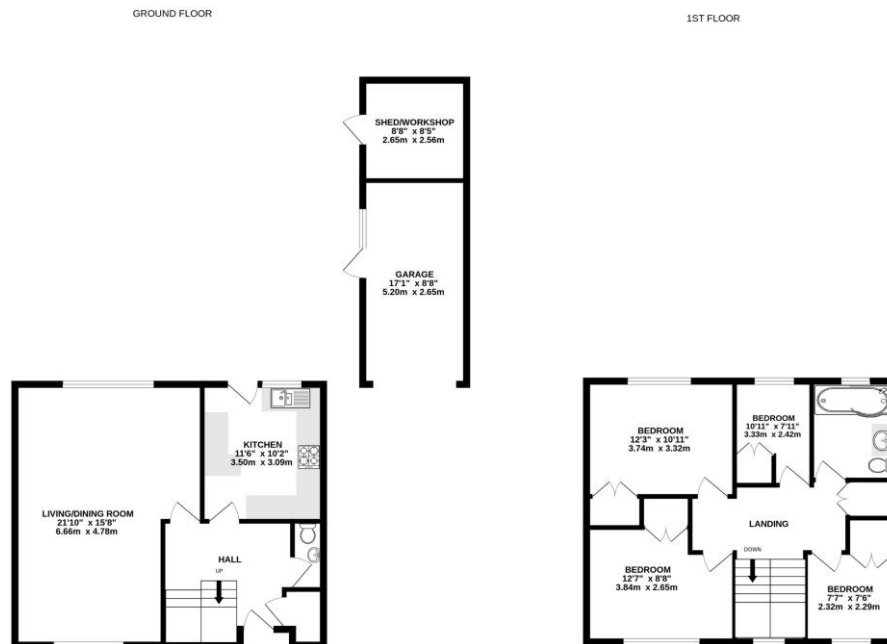
This light and spacious four bedroom detached family home offers well-balanced accommodation throughout. The ground floor features a generous dual-aspect 'L'-shaped living and dining room, a separate fitted kitchen, and a convenient downstairs cloakroom. Upstairs, there are two comfortable double bedrooms, two further well-proportioned single bedrooms, and a modern family bathroom. An internal inspection is highly recommended to truly appreciate all that this property has to offer.

## Outside

Externally, the property benefits from ample driveway parking leading to a detached single garage, along with mature, landscaped front and rear gardens that provide an attractive and private setting.

To view the Material Information Certificate for this property please click [Here](#) or contact us to request a copy.

## Floorplan



Whilst every attempt has been made to ensure the accuracy of the floorplan contained here, measurements of doors, windows, rooms and any other items are approximate and no responsibility is taken for any error, omission or mis-statement. This plan is for illustrative purposes only and should be used as such by any prospective purchaser. The services, systems and appliances shown have not been tested and no guarantee as to their operability or efficiency can be given.  
Made with Metropix C2025



TO ARRANGE A VIEWING PLEASE CONTACT:

Tel: **01276 685544** or Email:  
**camberley@bridges.co.uk**



Important Notice - These particulars are set out as a general outline only for the guidance of intended purchasers/tenants and do not form part of any offer or contract and must not be relied upon as statements or representations of fact. Purchasers/Tenants must satisfy themselves by inspection or otherwise as to their correctness.