



Two Bedroom Terraced House

Cypress Grove, Ash Vale, Surrey, GU12 5QW

Price: £325,000

- Two Bedrooms
- Terraced Home
- Living/Dining Room
- Garage in Nearby Block
- Private Garden
- Immaculate Throughout
- Walking Distance to Ash Vale Train Station
- EPC: D (67)



Description

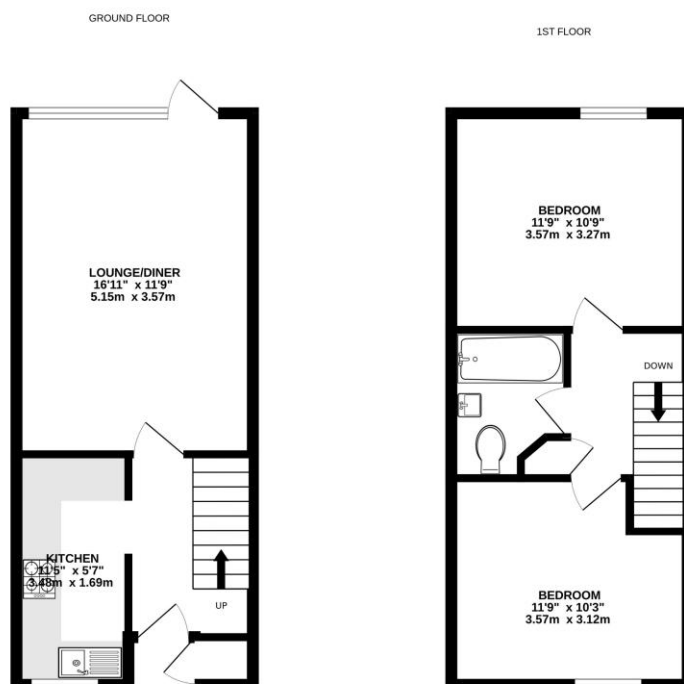
This stunning two double bedroom terraced home located on the extremely sought after Avondale development in Ash Vale is offered to the market in brilliant condition throughout as the current owners have renovated this property to a high standard.

The property boasts a private rear garden which has been recently landscaped with a garage in a block nearby. Situated in between Ash Vale mainline and North Camp train stations which are both only 5 minutes' walk away and the M3 junction is also a very short drive away.

Outside

To the front is a communal courtyard area with parking, to the rear is a private garden with a patio area ideal for alfresco dining and leading to shingled low-maintenance area fully enclosed by panel fencing with rear access to garage in a block. To view the Material Information Certificate for this property please click [Here](#) or contact us to request a copy.

Floorplan



Whilst every attempt has been made to ensure the accuracy of the floorplan contained herein, measurements of doors, windows, rooms and any other items are approximate and no responsibility is taken for any error, omission or mis-statement. This plan is for illustrative purposes only and should be used as such by any prospective purchaser. The services, systems and appliances shown have not been tested and no guarantee as to their condition or efficiency can be given.
Made with Metaphor 12/24



TO ARRANGE A VIEWING PLEASE CONTACT:
Tel: **01252 361550** or Email: **info@bridges.co.uk**



Important Notice - These particulars are set out as a general outline only for the guidance of intended purchasers/tenants and do not form part of any offer or contract and must not be relied upon as statements or representations of fact. Purchasers/Tenants must satisfy themselves by inspection or otherwise as to their correctness.