



VICTORIA HILL ROAD | FLEET


**Platinum
Homes**
BY BRIDGES



The Property

Whinrood is an outstanding character residence, situated in the highly sought-after Blue Triangle area of Fleet. Approached via electric gates and a sweeping gravel driveway with a central water feature, this home makes a striking first impression. Beautifully modernised throughout following a recent full renovation, it combines period charm with contemporary luxury.

The ground floor offers a choice of elegant living spaces, including formal reception rooms with original features such as an open fireplace and butler's bells, balanced by modern additions like new wood flooring and traditional radiators. At the heart of the home is a newly fitted bespoke oak kitchen with granite worktops, integrated appliances, Quooker tap, flowing into a spacious family room. A versatile layout also provides scope for a self-contained annexe, ideal for guests or extended family.

Upstairs, the home continues to impress with six well-proportioned bedrooms and beautifully finished bathrooms, all presented to a superb standard.

Outside

Outside, the landscaped gardens include a substantially sized patio with a covered bar area, perfect for entertaining guests, alongside an expansive lawn with potential for a tennis court.

The property sits on a generous plot of approximately 0.85 acres, offering both privacy and space in an enviable setting.





Features

- Six Bedrooms
- Four Reception Rooms
- Annexe Potential
- 0.85 Acre Plot
- No Onward Chain
- Blue Triangle Area of Fleet
- Fully Renovated in 2022
- EPC: C (69)
- Council Tax Band: G

Contact

Matt Fenn

mfenn@platinumbybridges.co.uk

01252975503


**Platinum
Homes**
BY BRIDGES



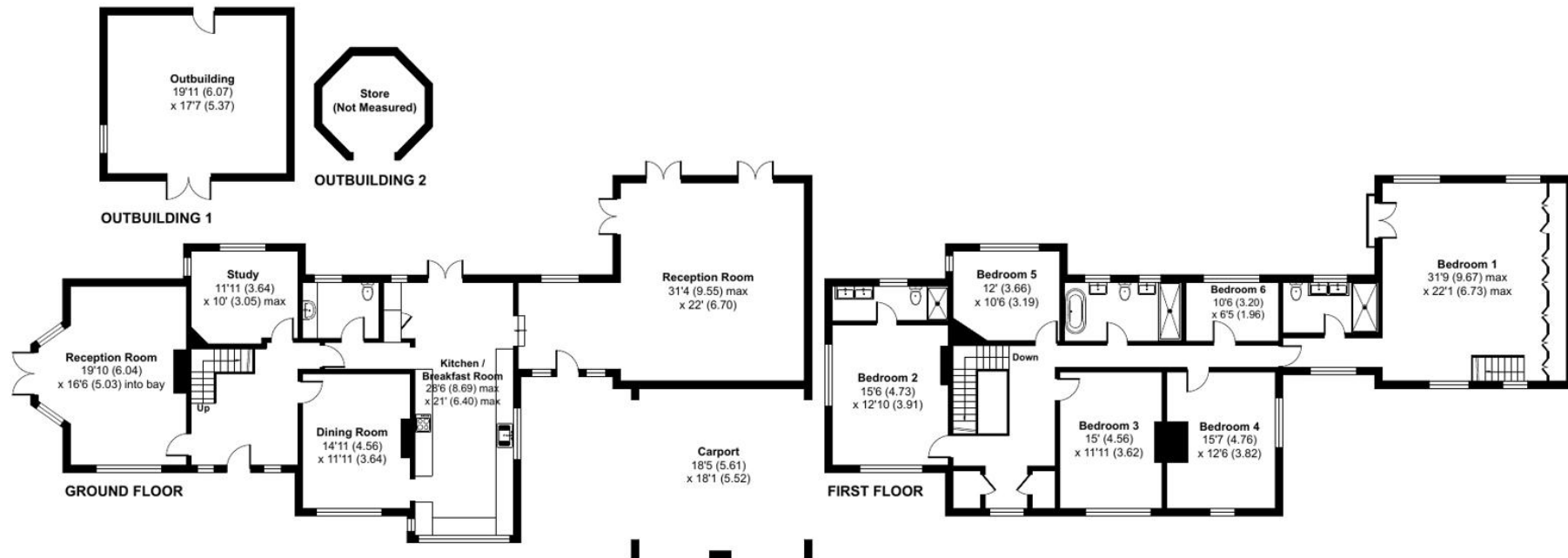
Victoria Hill Road, Fleet, Hampshire, GU51

Approximate Area = 3626 sq ft / 336.9 sq m (excludes carport & store)

Outbuilding = 353 sq ft / 32.8 sq m

Total = 3979 sq ft / 369.7 sq m

For identification only - Not to scale



Floor plan produced in accordance with RICS Property Measurement Standards incorporating International Property Measurement Standards (IPMS2 Residential). © nitchecom 2024.
Produced for Bridges Estate Agents Ltd (Platinum Homes). REF: 1088477

**Platinum
Homes**
BY BRIDGES

Important Notice - These particulars are set out as a general outline only for the guidance of intended purchasers and do not form part of any offer or contract and must not be relied upon as statements or representations of fact. Purchasers must satisfy themselves by inspection or otherwise as to their correctness.

