



Three Bedroom Semi-Detached House Calvert Close, Aldershot, Hampshire, GU12 4QX

Price: £425,000

- Three Bedrooms
- Semi-Detached Family Home
- Cul-de-Sac Location
- Driveway
- Rear Garden
- Refurbished Kitchen
- Refurbished Bathroom
- EPC: D (63)



Description

A stunning semi-detached family home, positioned in one of Aldershot's most sought-after locations. Set over two floors, with internal accommodation presented in exceptional order throughout.

The property benefits from three bedrooms and two reception rooms. The ground floor boasts a welcoming entrance hall which leads you to either the main lounge or a high gloss fitted kitchen. The first floor offers a principal bedroom, two further bedrooms, and a family bathroom.

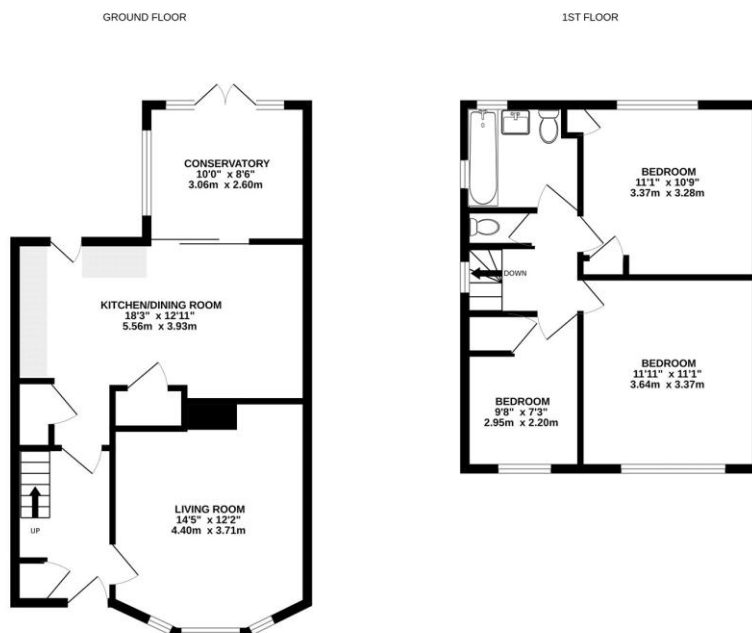
The property offers versatile family living options, all presented with contemporary and modern styling. This family home has been the subject of many improvements by the current owners, which can be seen in abundance.

The property further benefits from a secluded, established, idyllic garden, along with driveway parking and a garage. Located just 1.7 miles from the train station, which offers direct links to London Waterloo, this exceptional family home is also within walking distance of popular schools.

Outside

Positioned in a lovely cul-de-sac, this property benefits from driveway parking for numerous vehicles. The garden is mainly laid to lawn with a patio section towards the rear. Additional storage can be found as well. To view the Material Information Certificate for this property please click [Here](#) or contact us to request a copy.

Floorplan



While every attempt has been made to ensure the accuracy of the floorplan contained here, measurements of doors, windows, rooms and any other items are approximate and no responsibility is taken for any error, omission or mis-statement. This plan is for illustrative purposes only and should be used as such by any prospective purchaser. The services, systems and appliances shown have not been tested and no guarantee as to their operability or efficiency can be given.
Made with Metropack C2025.



TO ARRANGE A VIEWING PLEASE CONTACT:
Tel: **01252 361550** or Email: **info@bridges.co.uk**



Important Notice - These particulars are set out as a general outline only for the guidance of intended purchasers/tenants and do not form part of any offer or contract and must not be relied upon as statements or representations of fact. Purchasers/Tenants must satisfy themselves by inspection or otherwise as to their correctness.