



Two Bedroom Ground Floor Retirement Apartment Palace Gate, Odiham, Hook, Hampshire, RG29 1JZ

Price: £140,000

- Two Bedroom Ground Floor
- Built-In Wardrobes in Both Bedrooms
- Feature Electric Fireplace in Lounge
- Fitted Kitchen with Appliances
- Walk-In Shower Bathroom Suite
- Landscaped Communal Gardens
- No Onward Chain
- EPC: C (69)



Description

This well-presented ground floor apartment is set within the desirable Palace Gate development, designed exclusively for those over 55. With level access and a lift serving the upper floors, it offers practical living without compromising on comfort. The layout includes an inviting hallway leading to a bright living and dining area, where a feature electric fireplace creates a welcoming focal point. The kitchen is fitted with a full range of units and worktops, along with integrated appliances including a gas hob, electric oven and grill, fridge freezer, and space for a washing machine. Both bedrooms feature built-in wardrobes, making excellent use of space, accompanied by a generously sized bathroom. The property is offered to the market with no onward chain.

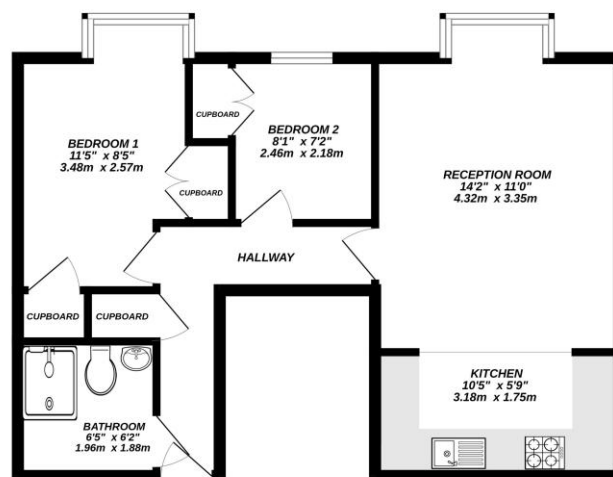
Outside

Set within attractive landscaped grounds, residents benefit from well-maintained communal gardens and ample parking for both visitors and homeowners. Palace Gate is a well-regarded development with a friendly community feel, overseen by an on-site estate manager and supported by a 24-hour emergency call system. Odiham High Street is just a short distance away, offering everyday essentials including doctors, dentists, opticians, and a Co-op, alongside independent shops, eateries, and a weekly market. The nearby Cross Barn hosts a variety of community activities from craft groups and yoga to film screenings adding to the vibrant lifestyle this location provides.

To view the Material Information Certificate for this property please click [Here](#) or contact us to request a copy.

Floorplan

GROUND FLOOR



PALACE GATE

Bridges
Made with Mapbox (2025)



TO ARRANGE A VIEWING PLEASE CONTACT:
Tel: **01256 769999** or Email: **info@bridges.co.uk**



Important Notice - These particulars are set out as a general outline only for the guidance of intended purchasers/tenants and do not form part of any offer or contract and must not be relied upon as statements or representations of fact. Purchasers/Tenants must satisfy themselves by inspection or otherwise as to their correctness.