



## Three Bedroom Semi-Detached House

**Heron Close, Church Crookham, Fleet, Hampshire, GU52 6EF**

**Price: £430,000**

- Three Bedrooms
- Semi-Detached
- Extended Family Home
- Sought After School Catchment
- Close to Amenities
- Viewing Advised
- Bath & Shower Room
- EPC: TBC





## Description

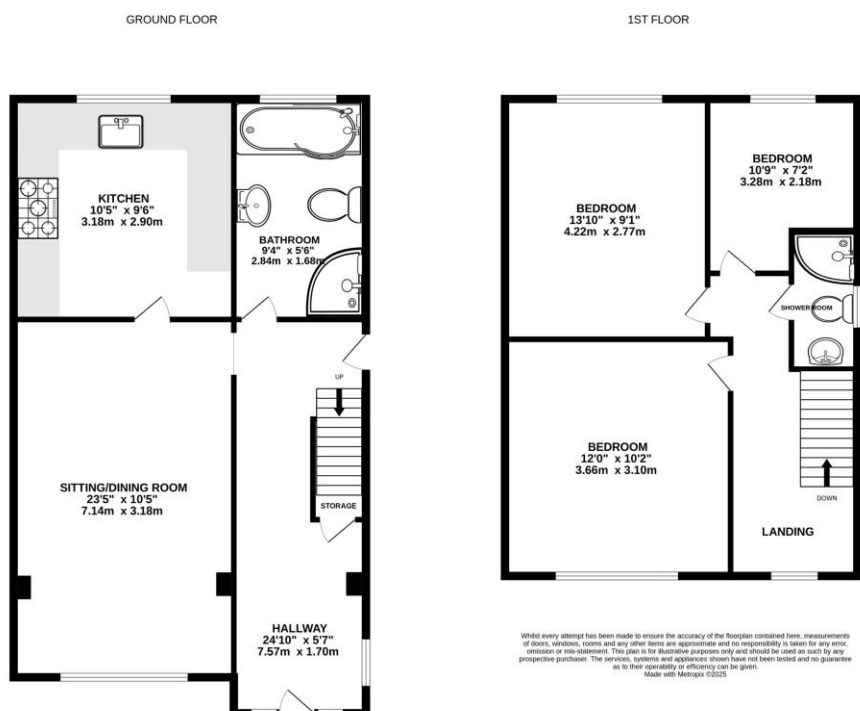
Set at the entrance of a quiet cul-de-sac in popular Church Crookham, this extended three bedroom semi-detached home is ideal for family living. It's close to local amenities, woodland walks, and sought-after schools. Inside, a spacious hallway leads to an open-plan living/dining room, a well equipped kitchen, and a modern four piece bathroom. Upstairs offers three bright bedrooms and a contemporary shower room. Outside, enjoy a well-planted front garden, driveway parking, and a private rear garden perfect for children or summer entertaining. Scope to extend (STPP) adds long-term potential.

## Outside

Occupying a prime spot in a quiet Church Crookham cul-de-sac, this semi-detached home offers strong kerb appeal with a planted front garden, private driveway, and side access. The rear garden is low maintenance and versatile, featuring a patio for alfresco dining, colourful borders, and a central artificial lawn ideal for play or year round enjoyment.

To view the Material Information Certificate for this property please click [Here](#) or contact us to request a copy.

## Floorplan



TO ARRANGE A VIEWING PLEASE CONTACT:  
Tel: 01252 361550 or Email: [info@bridges.co.uk](mailto:info@bridges.co.uk)



Important Notice - These particulars are set out as a general outline only for the guidance of intended purchasers/tenants and do not form part of any offer or contract and must not be relied upon as statements or representations of fact. Purchasers/Tenants must satisfy themselves by inspection or otherwise as to their correctness.