



## Four Bedroom Semi-Detached House

### Boole Heights, Bracknell, Berkshire, RG12 7GG

Price: £450,000

- Four Bedrooms
- Semi-Detached Townhouse
- Freehold
- En Suite and Downstairs Cloakroom
- Garage
- Driveway
- Garden
- EPC: C (75)



## Description

Situated in a highly desirable residential location, this well maintained semi-detached townhouse offers spacious and versatile accommodation perfect for family living. Conveniently close to local amenities and The Lexicon shopping centre, the property combines comfort, practicality and style.

The ground floor features a refitted kitchen, a convenient downstairs cloakroom, and a generously sized lounge/dining area. French doors lead from the lounge into a spacious low maintenance garden ideal for outdoor entertaining and family activities. Ample windows throughout ensure an abundance of natural light.

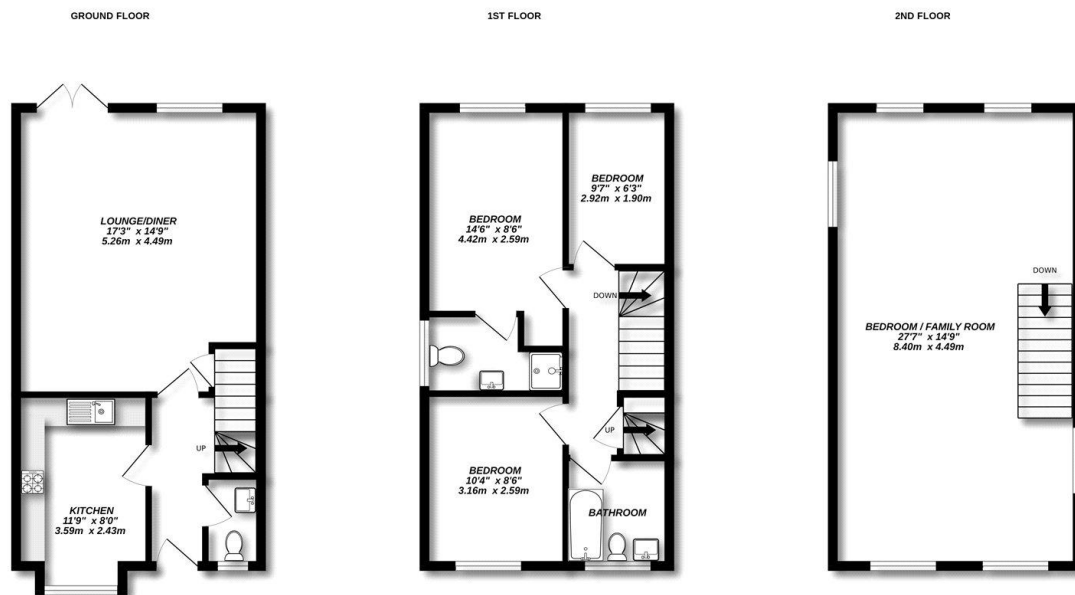
This floor comprises two double bedrooms, including one with an en suite shower room, a well appointed family bathroom, and a single bedroom ideal as a child's room or home office.

The top floor boasts a particularly spacious principal bedroom or family room, spanning the full length of the house. It features characterful sloped ceilings and Velux windows that flood the room with natural light, creating a bright and airy feel.

## Outside

The enclosed rear garden is private, secure, and generously sized perfect for families. Additional benefits include a garage with direct access from the garden and a driveway to the side of the property, providing off street parking.

## Floorplan



Made with Metropix ©2025



TO ARRANGE A VIEWING PLEASE CONTACT:

Tel: **01344 962150** or Email:



Important Notice - These particulars are set out as a general outline only for the guidance of intended purchasers/tenants and do not form part of any offer or contract and must not be relied upon as statements or representations of fact. Purchasers/Tenants must satisfy themselves by inspection or otherwise as to their correctness.