



Two Bedroom Apartment

Marston Walk, Basingstoke, Hampshire, RG24 9FS

Price: £220,000

- Two Double Bedrooms
- Top Floor Apartment
- Stylish
- Open Plan Living
- Parking
- Desired Location
- Close to Local Amenities
- EPC: B (82)



Description

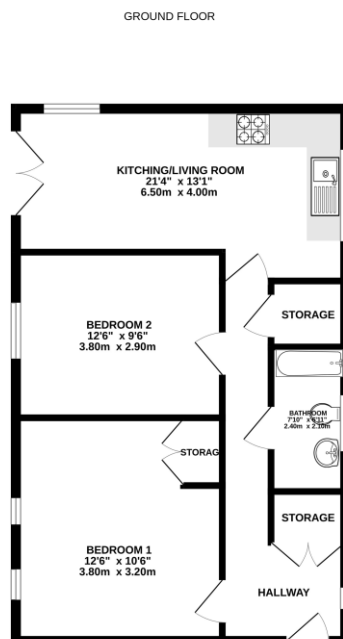
Situated in the popular Sherborne Fields development, this modern two-bedroom top-floor flat offers comfortable, low-maintenance living in a highly convenient location. The property features two spacious double bedrooms and a bright, airy open-plan living area with plenty of room for both lounge and dining furniture. The adjoining kitchen is well-equipped with integrated appliances, providing a practical and functional space for everyday use. The flat also benefits from a modern three-piece family bathroom, adding to the overall convenience and appeal of the home. With its generous layout and excellent location close to local amenities and transport links, this flat presents a great opportunity for first-time buyers, downsizers, or investors looking for a well-proportioned property in a sought-after area.

Outside

The property benefits from a secure entry system and well-kept communal areas, providing peace of mind and a welcoming first impression. There is also convenient parking to the front of the building for residents and visitors.

To view the Material Information Certificate for this property please click [Here](#) or contact us to request a copy.

Floorplan



Whilst every attempt has been made to ensure the accuracy of the floorplan contained here, measurements of doors, windows, rooms and any other items are approximate and no responsibility is taken for any error, omission or misstatement. This plan is for illustrative purposes only and should be used as a guide only by any prospective purchaser. The services, fixtures and appliances shown here are for illustrative purposes and no guarantee is given as to their operability or efficiency can be given. Made with Hogen 12/02



TO ARRANGE A VIEWING PLEASE CONTACT:
Tel: **01256 880001** or Email: **info@bridges.co.uk**



Important Notice - These particulars are set out as a general outline only for the guidance of intended purchasers/tenants and do not form part of any offer or contract and must not be relied upon as statements or representations of fact. Purchasers/Tenants must satisfy themselves by inspection or otherwise as to their correctness.