



Two Bedroom Maisonette

St. James Terrace, Farnham, Surrey, GU9 7JT

Price: £250,000

- Two Bedrooms
- Maisonette
- Spacious Lounge
- Close to the Train Station
- Close to Farnham Park
- Close to Farnham Town Centre
- Estimated Rental Price: £1,350 pcm
- EPC: D (58)



Description

Bridges offer the fantastic opportunity to acquire this two double bedroom character home situated within a short walk from Farnham`s town centre, Farnham Park and the train station. This split-level maisonette comprises a spacious living room/dining area with a bay window allowing for plenty of light, a fitted kitchen with a pleasant outlook, a family bathroom suite and two double bedrooms.

Outside

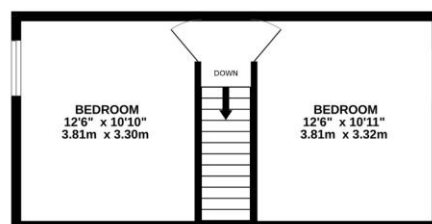
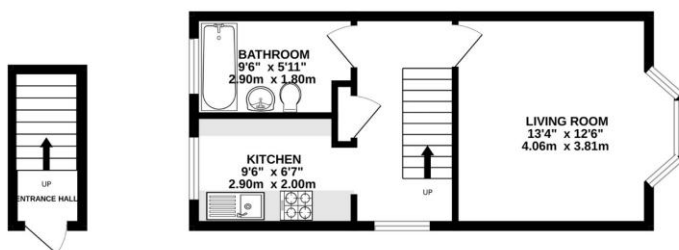
This home has communal parking close by.

To view the Material Information Certificate for this property please click [Here](#) or contact us to request a copy.

Floorplan

GROUND FLOOR

1ST FLOOR



Whilst every attempt has been made to ensure the accuracy of the floorplan contained here, measurements of doors, windows, rooms and any other items are approximate and no responsibility is taken for any error, omission or mis-statement. This plan is for illustrative purposes only and should be used as such by any prospective purchaser. The services, systems and appliances shown have not been tested and no guarantee as to their operability or efficiency can be given.
Made with Metropix 52025



TO ARRANGE A VIEWING PLEASE CONTACT:
Tel: **01252 361550** or Email: **info@bridges.co.uk**



Important Notice - These particulars are set out as a general outline only for the guidance of intended purchasers/tenants and do not form part of any offer or contract and must not be relied upon as statements or representations of fact. Purchasers/Tenants must satisfy themselves by inspection or otherwise as to their correctness.