

One Double Bedroom Apartment Fleet Road, Fleet, Hampshire, GU51 3QF

Offers in Excess of: £170,000

- One Bedroom Apartment
- Open Plan Kitchen/Living Room
- Allocated Parking
- No Onward Chain
- Private Garden
- Superb Location
- Close to Amenities
- EPC: D (67)



Description

Located within walking distance of both Fleet Train Station and Fleet High Street, this apartment is in fantastic condition and ideally positioned.

It offers an open plan kitchen/living area, a double bedroom, a modern bathroom, and a private garden.

The property is also offered to the market with no onward chain.

Outside

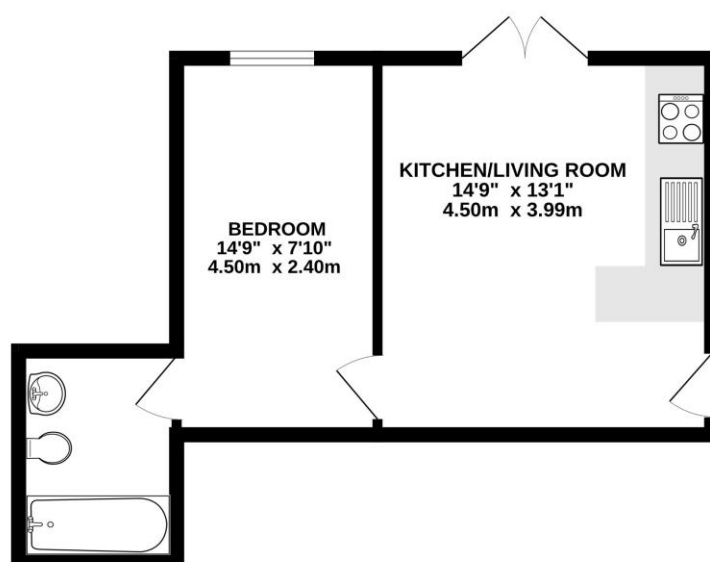
The property benefits from a private garden, with doors opening onto it from the open plan living area. It features a decked area, perfect for al fresco dining, with the remainder laid to lawn.

The property also offers side access to the rear garden, an allocated parking space, and is within walking distance of both Fleet High Street and Fleet Train Station.

To view the Material Information Certificate for this property please click [Here](#) or contact us to request a copy.

Floorplan

GROUND FLOOR



Whilst every attempt has been made to ensure the accuracy of the floorplan contained here, measurements of doors, windows, rooms and any other items are approximate and no responsibility is taken for any error, omission or mis-statement. This plan is for illustrative purposes only and should be used as such by any prospective purchaser. The services, systems and appliances shown have not been tested and no guarantee as to their operability or efficiency can be given.
Made with Metaphor (2023)



TO ARRANGE A VIEWING PLEASE CONTACT:
Tel: **01252 361550** or Email: **info@bridges.co.uk**



Important Notice - These particulars are set out as a general outline only for the guidance of intended purchasers/tenants and do not form part of any offer or contract and must not be relied upon as statements or representations of fact. Purchasers/Tenants must satisfy themselves by inspection or otherwise as to their correctness.