

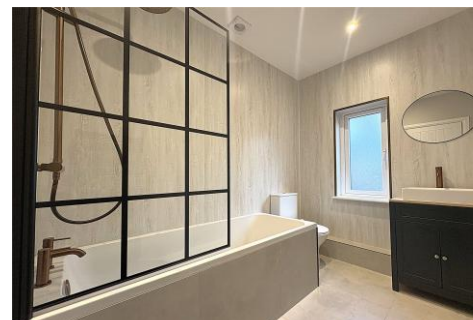


Three Bedroom Maisonette

Middle Gordon Road, Camberley, Surrey, GU15 2JA

Guide Price: £375,000

- Three Double Bedrooms
- First Floor Maisonette
- Recently Refurbished
- Allocated Parking
- Central Location
- Ideal Investment Opportunity
- Garage
- EPC: D (62)



Description

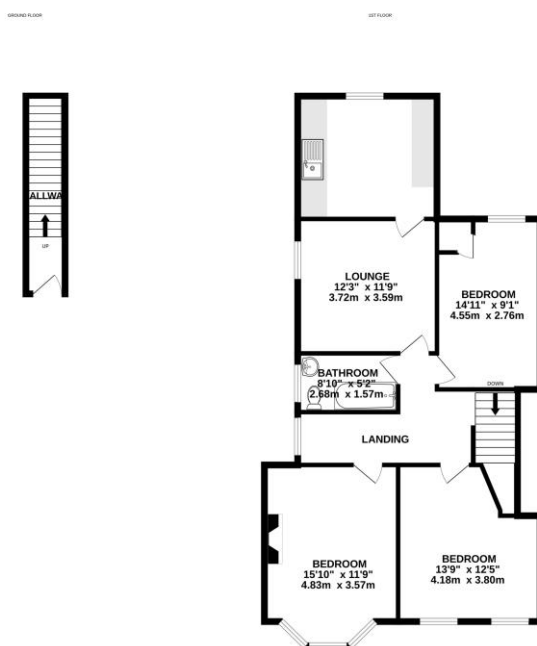
Having just undergone a substantial refurbishment, located within walking distance of Camberley town centre, is this stunning three-bedroom maisonette. The property benefits from three double bedrooms, a spacious living room leading onto the refitted kitchen, and finally the bathroom.

Outside

To the front there is off-street parking. To the rear there is a garage.

To view the Material Information Certificate for this property please click [Here](#) or contact us to request a copy.

Floorplan



Whilst every attempt has been made to ensure the accuracy of the floorplan contained here, measurements of doors, windows, rooms and any other items are approximate and no responsibility is taken for any error, omission or mis-statement. This plan is for illustrative purposes only and should be used as such for any prospective purchaser. The seller makes no representation or warranty as to the accuracy of the floorplan and no guarantee as to their quantity or efficiency can be given.
Marked with Measure 12/2021



TO ARRANGE A VIEWING PLEASE CONTACT:

Tel: **01276 685544** or Email:
camberley@bridges.co.uk



Important Notice - These particulars are set out as a general outline only for the guidance of intended purchasers/tenants and do not form part of any offer or contract and must not be relied upon as statements or representations of fact. Purchasers/Tenants must satisfy themselves by inspection or otherwise as to their correctness.