



## Three Bedroom Detached House

**Keswick Close, Camberley, Surrey, GU15 1RN**

Offers in excess of: £475,000

- Three Bedrooms
- Detached Home
- Refurbished Throughout
- Media Room
- Ideal for Families
- Tomlinscote Catchment
- Close to Woodlands and Parks
- EPC: C (69)





## Description

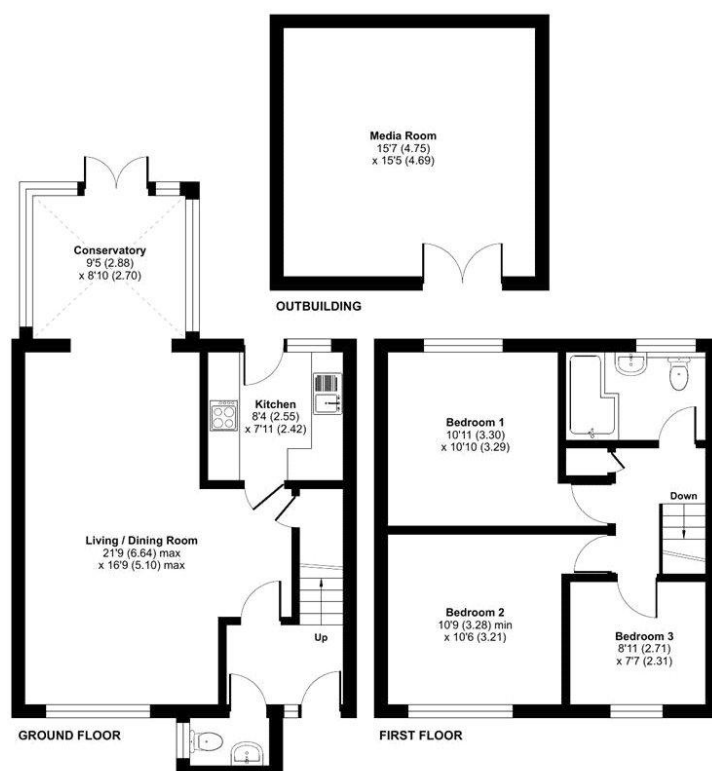
Situated in a quiet cul-de-sac in Heatherside, this is an extremely well presented three bedroom detached family home which has undergone a high-quality refurbishment! This includes new windows, replastering of the whole house, solid oak doors, designer radiators throughout and many more features! This is a ready to move in home ideal for first time buyers or families. The ground floor provides a fantastic open plan living/dining room leading into the conservatory with access to the garden, a refitted kitchen with Samsung integrated dishwasher and an AEG oven, and a downstairs cloakroom. Upstairs there are two double bedrooms with a smaller third room and the family bathroom. Both the bathroom and cloakroom have been replaced by the current owner. The property is within walking distance to local amenities, woodlands and parks, whilst still being close to Camberley town centre. Heather Ridge, Ravenscote and Tomlinscote schools are all within catchment.

## Outside

The rear garden is a great place for BBQs and entertaining, and benefits from the games room to the rear which could easily be utilised as an office or family/games room.

To view the Material Information Certificate for this property please click [Here](#) or contact us to request a copy.

## Floorplan



TO ARRANGE A VIEWING PLEASE CONTACT:

Tel: 01276 685544 or Email:

[camberley@bridges.co.uk](mailto:camberley@bridges.co.uk)



Important Notice - These particulars are set out as a general outline only for the guidance of intended purchasers/tenants and do not form part of any offer or contract and must not be relied upon as statements or representations of fact. Purchasers/Tenants must satisfy themselves by inspection or otherwise as to their correctness.