



Two Bedroom Apartment

Charteris Close, Wellesley, Aldershot, Hampshire, GU11 4DZ

Price: £139,000

- Two Double Bedrooms
- 50% Shared Ownership
- Two Allocated Parking Spaces
- Close to Town Centre
- Lease Approximately 993 Years
- Scenic Views
- Close to Train Station
- EPC: B (85)



Description

50% SHARED OWNERSHIP WITH NO ONWARD CHAIN

A fantastic opportunity to purchase a 50% share of this two bedroom apartment, immaculately presented throughout and situated at the heart of the Wellesley development in Aldershot.

This well presented apartment comes with the rare bonus of two allocated parking spaces. Accommodation comprises an open-plan living room, a kitchen with integrated appliances, and two spacious double bedrooms with fitted wardrobes, including an en-suite to the principal bedroom. Additionally, there is visitor parking and lockable outside storage for bicycles.

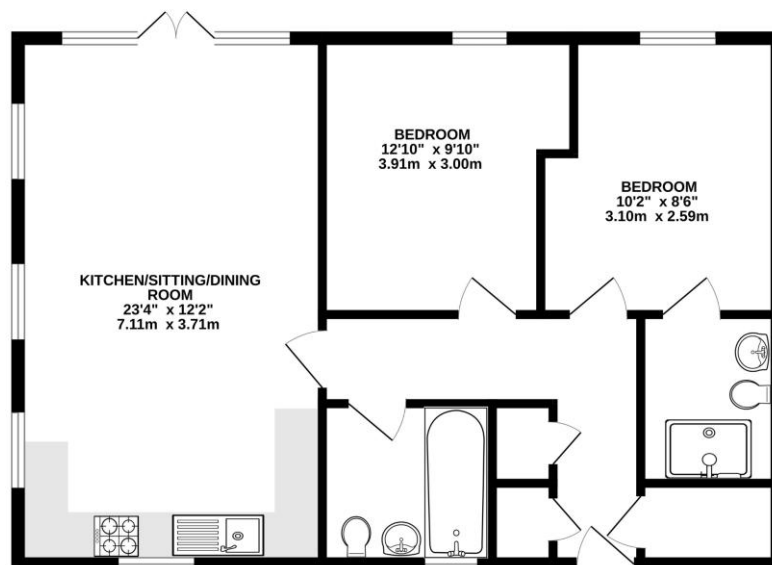
Aldershot town centre and mainline railway station are both less than one mile away, as are local shops and woodland walks. This price is based on purchasing the 50% share for a two bedroom apartment at £139,000.

Outside

Outside features two parking spaces and the property is positioned close to local woodland and walking routes.

Floorplan

THIRD FLOOR



Whilst every attempt has been made to ensure the accuracy of the floorplan contained here, measurements of floors, windows, doors and any other items are approximate and no responsibility is taken for any error, omission or mis-statement. This plan is for illustrative purposes only and should be used as such by any prospective purchaser. The services, systems and appliances shown have not been tested and no guarantee as to their operability or efficiency can be given.
Made with Metreplex 12/2025



TO ARRANGE A VIEWING PLEASE CONTACT:
Tel: **01252 361550** or Email: **info@bridges.co.uk**



Important Notice - These particulars are set out as a general outline only for the guidance of intended purchasers/tenants and do not form part of any offer or contract and must not be relied upon as statements or representations of fact. Purchasers/Tenants must satisfy themselves by inspection or otherwise as to their correctness.