



## Two Bedroom Apartment

**Pegasus Court, Fleet, Hampshire, GU51 4SX**

Price: £165,000

- Two Bedroom
- No Onward Chain
- Shower in Bathroom
- Spacious Living Area
- Juliet Balcony
- No Onward Chain
- Walking Distance to Fleet High Street
- EPC: D (63)



## Description

Offered to the market in the ever popular Pegasus Court, within walking distance of Fleet High Street and benefitting from no onward chain, is this wonderful two bedroom apartment.

The property features a spacious living area with a Juliet balcony, which connects through to the kitchen.

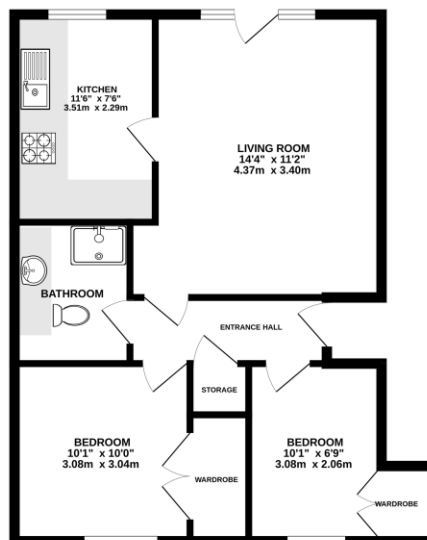
It boasts two bedrooms with built-in storage, along with a spacious bathroom that includes a shower.

## Outside

The property is a short walk from Fleet High Street and the train station. It benefits from residents parking and immaculately presented grounds.

## Floorplan

SECOND FLOOR



Whilst every effort has been made to ensure the accuracy of the floorplan contained herein, measurements of doors, windows, rooms and any other items are approximate and no responsibility is taken for any error, omission or mis-statement. This plan is for illustrative purposes only and should be used as a guide to the prospective purchaser. The services, systems and appliances shown have not been tested and no guarantee as to their operability or efficiency can be given.  
Made with Intertop 12/2012



**TO ARRANGE A VIEWING PLEASE CONTACT:**  
Tel: **01252 361550** or Email: **info@bridges.co.uk**



**Important Notice** - These particulars are set out as a general outline only for the guidance of intended purchasers/tenants and do not form part of any offer or contract and must not be relied upon as statements or representations of fact. Purchasers/Tenants must satisfy themselves by inspection or otherwise as to their correctness.