



Four Bedroom Semi-Detached House

Gloucester Drive, Basingstoke, Hampshire, RG22 4PH

Price: £475,000

- Four Bedrooms
- Ample Driveway Parking
- Garage
- West Facing Garden
- Refitted Kitchen
- No Onward Chain
- Immaculately Presented Throughout
- EPC: C (74)



Description

Offered for sale with no onward chain, this immaculate semi-detached home is situated in the sought after area of Kempshott Rise. Beautifully presented throughout, it boasts a range of features that make it an excellent choice for families.

The property includes four generous bedrooms, two of which benefit from built-in wardrobes providing ample storage. These rooms are served by a well appointed family bathroom.

At the heart of the home is a spacious open-plan kitchen, thoughtfully designed for modern living. It flows seamlessly into one of the three reception rooms, creating a versatile space ideal for both everyday family life and entertaining.

Two of the reception rooms open directly onto the garden, filling the home with natural light and offering delightful views of the well-tended outdoor area.

Outside

Externally, the property offers a west facing garden with decked patio, lush lawn, and additional side space featuring an apple tree. A single garage and off-road parking add convenience.

Gloucester Drive is popular with families and professionals, close to schools, shops, bus routes, and the town centre with excellent M3 links. On the edge of countryside, it also benefits from nearby parks, pathways, and Down Grange home to sports clubs, fitness facilities, and open spaces ideal for dog walking and family leisure.

To view the Material Information Certificate for this property please click [Here](#) or contact us to request a copy

Floorplan

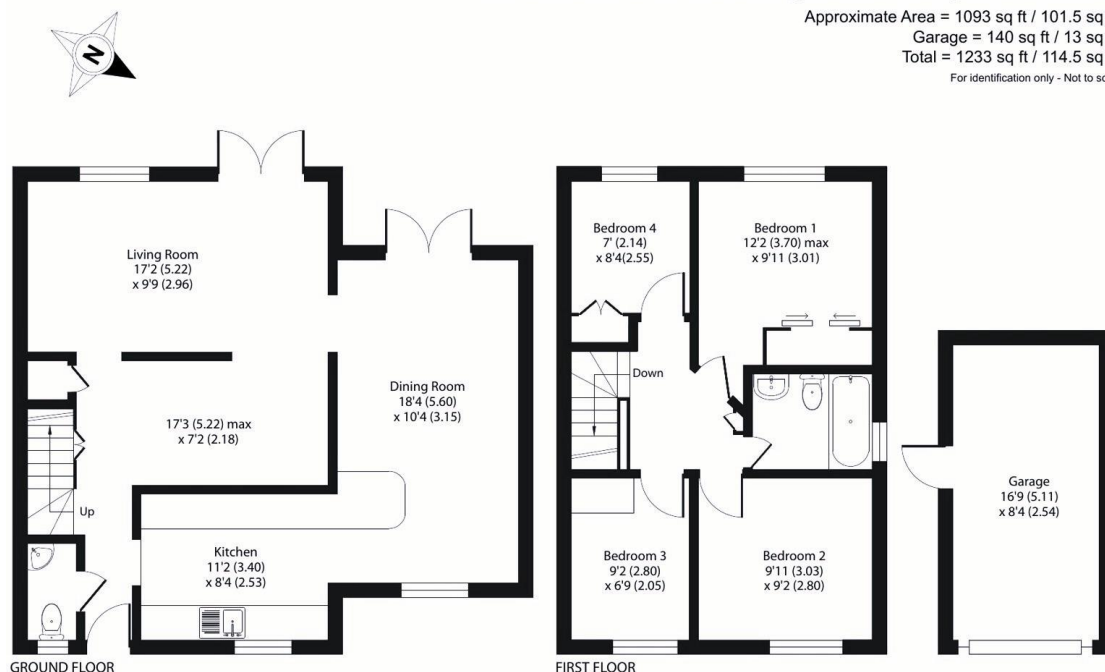
Gloucester Drive, Basingstoke, Hampshire, RG22

Approximate Area = 1093 sq ft / 101.5 sq m

Garage = 140 sq ft / 13 sq m

Total = 1233 sq ft / 114.5 sq m

For identification only - Not to scale



Floor plan produced in accordance with RICS Property Measurement 2nd Edition, incorporating International Property Measurement Standards (IPMS2 Residential). © nitchecom 2025.



TO ARRANGE A VIEWING PLEASE CONTACT:
Tel: **01256 880001** or Email: **info@bridges.co.uk**



Important Notice - These particulars are set out as a general outline only for the guidance of intended purchasers/tenants and do not form part of any offer or contract and must not be relied upon as statements or representations of fact. Purchasers/Tenants must satisfy themselves by inspection or otherwise as to their correctness.