

## One Double Bedroom Ground Floor Apartment Hospital Road, Wellesley, Aldershot, Hampshire, GU11 4EJ

Offers in Excess of: £240,000

- One Double Bedroom
- Desirable Location
- Open Plan Living
- Kitchen with Integrated Appliances
- Private Outside Space
- Allocated Parking
- Overlooking Gun Hill
- EPC: B (83)



## Description

Situated at the head of Gun Hill, this beautifully presented maisonette is offered to the market with the added benefit of its own private outside space.

This home features its own private front door, and upon entering the property you are greeted by a light and airy hallway benefitting from two storage cupboards. The hallway leads into an open-plan living room, which includes a fully integrated kitchen exquisitely presented with high-gloss units and Ice Branco quartz marble worktops. Additionally, there is a dining area to the side of the kitchen.

The spacious double bedroom benefits from fitted wardrobes, while the bathroom is in pristine condition, showcasing the original finish.

The outside space is accessed to the side of the property, offering the ideal summer retreat. Also included with this home is an external storage unit. Allocated parking and visitor parking are provided.

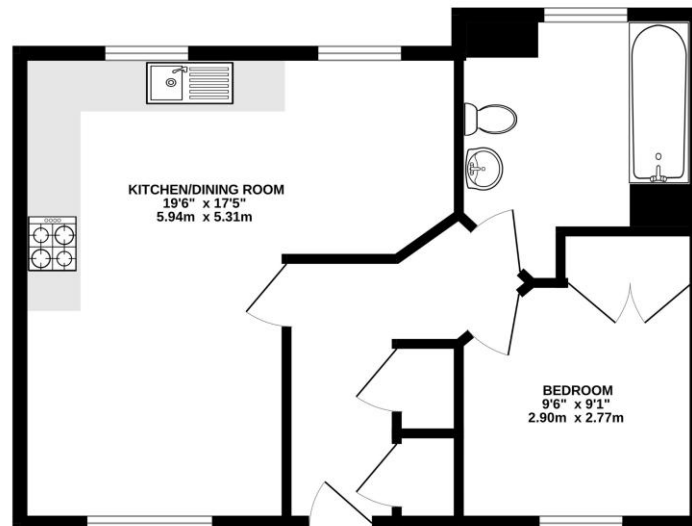
## Outside

To the front of the property, there is an area of laid lawn with side access via a wooden gate. A private patio area provides the perfect setting for alfresco dining in the summer sun. The property also benefits from an external storage cupboard, separate from the garden.

To view the Material Information Certificate for this property please click [Here](#) or contact us to request a copy.

## Floorplan

GROUND FLOOR



Whilst every attempt has been made to ensure the accuracy of the floorplan contained here, measurements of doors, windows, rooms and any other items are approximate and no responsibility is taken for any error, omission or mis-statement. This plan is for illustrative purposes only and should be used as such by any prospective purchaser. The services, systems and appliances shown have not been tested and no guarantee as to their operability or efficiency can be given.  
Made with NetLogo 6.2.0/23



**TO ARRANGE A VIEWING PLEASE CONTACT:**  
Tel: **01252 361550** or Email: **info@bridges.co.uk**



**Important Notice** - These particulars are set out as a general outline only for the guidance of intended purchasers/tenants and do not form part of any offer or contract and must not be relied upon as statements or representations of fact. Purchasers/Tenants must satisfy themselves by inspection or otherwise as to their correctness.