

Three Bedroom Terraced House

Wheatley, Bracknell, Berkshire, RG12 8UG

Price: £338,000

- Three Bedrooms
- Two Reception Rooms
- Downstairs Cloakroom
- Garage In a Nearby Block
- Close To Amenities
- Enclosed Rear Garden
- Good Transport Links
- EPC: D (60)



Description

NO ONWARD CHAIN An attractive and well presented three bedroom family home offering generous living space. The ground floor features a modern fitted kitchen and a downstairs cloakroom, while upstairs provides three good-sized bedrooms and a family bathroom.

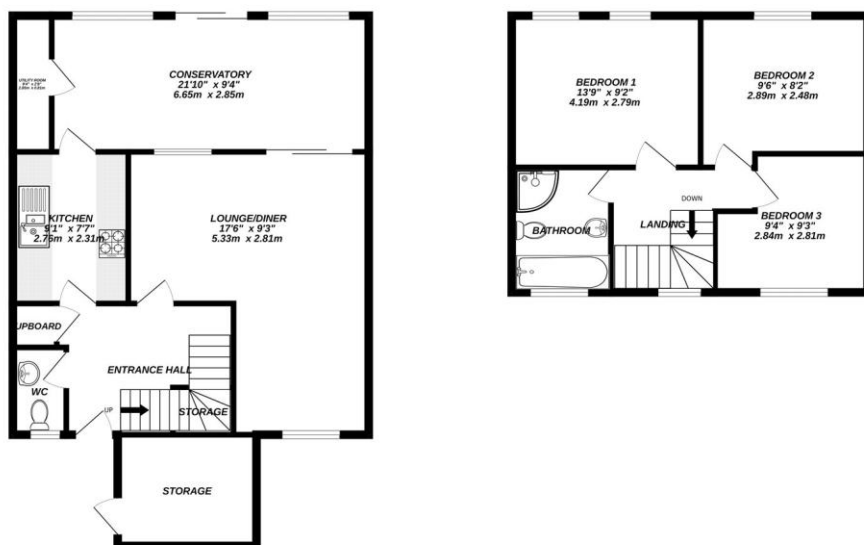
Outside, the property enjoys a landscaped garden, communal parking, and a garage in a nearby block. Local shops, schools, and amenities are close by, with excellent transport links via both the M3 and M4 motorways.

Outside

A spacious garden with a patio, rear gate, and generous lawn ideal for outdoor living.

To view the Material Information Certificate for this property please click [Here](#) or contact us to request a copy.

Floorplan



Bridges
Made with Metropix ©2025



TO ARRANGE A VIEWING PLEASE CONTACT:

Tel: 01344 962150 or Email:



Important Notice - These particulars are set out as a general outline only for the guidance of intended purchasers/tenants and do not form part of any offer or contract and must not be relied upon as statements or representations of fact. Purchasers/Tenants must satisfy themselves by inspection or otherwise as to their correctness.