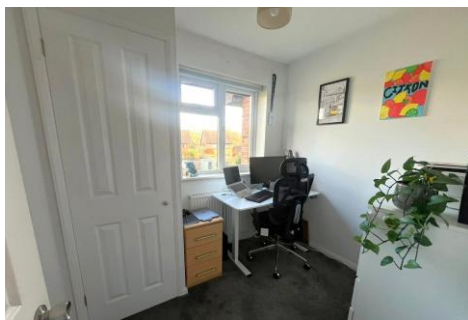


## Two Bedroom Terraced House

**Sorrells Close, Chineham, Basingstoke, Hampshire, RG24 8TB**

Price: £260,000

- Two Bedroom Terrace
- Chineham Location
- Back to Back
- Allocated Parking
- Visitors Parking
- Garden
- Entrance Porch
- EPC: C (75)



## Description

Offered to the market is this well presented two bedroom terraced back to back home, situated in the ever popular Chineham area.

The ground floor features an entrance porch, a spacious living room and a fitted kitchen. Upstairs, the property offers two bedrooms along with a family bathroom.

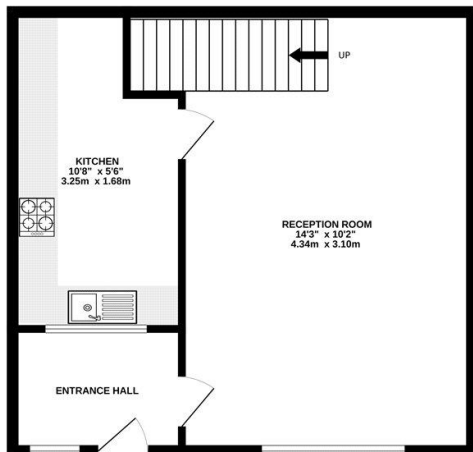
## Outside

Outside, to the front of the property, there is an allocated parking space along with visitor parking. The front garden features a pathway leading to the front door, a small flower bed and the remainder is laid to lawn.

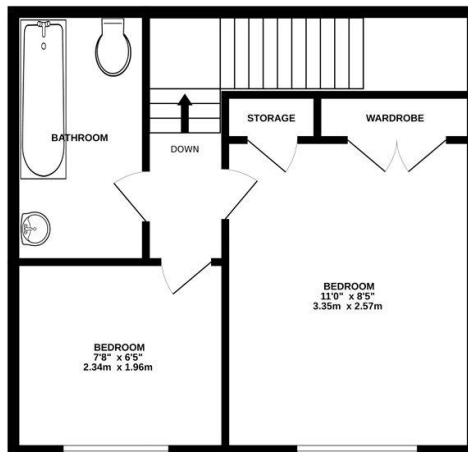
To view the Material Information Certificate for this property please click [Here](#) or contact us to request a copy

## Floorplan

GROUND FLOOR



1ST FLOOR



Whilst every attempt has been made to ensure the accuracy of the floorplan contained here, measurements of doors, windows, rooms and any other items are approximate and no responsibility is taken for any error, omission or mis-statement. This plan is for illustrative purposes only and should be used as such by any prospective purchaser. The services, systems and appliances shown have not been tested and no guarantee as to their operability or efficiency can be given.  
Made with Metropix ©2025



**TO ARRANGE A VIEWING PLEASE CONTACT:**  
Tel: **01256 880001** or Email: **info@bridges.co.uk**



**Important Notice - These particulars are set out as a general outline only for the guidance of intended purchasers/tenants and do not form part of any offer or contract and must not be relied upon as statements or representations of fact. Purchasers/Tenants must satisfy themselves by inspection or otherwise as to their correctness.**