



Three Bedroom Semi-Detached House

Gorse Road, Frimley, Camberley, Surrey, GU16 8TB

Price: £465,000

- Three Bedrooms
- 21ft Living/Dining Room
- Modern Refitted Kitchen
- Garage and Driveway Parking
- Ideal Family Home
- Ideal for School Catchments
- Close to Frimley Park Hospital
- EPC: D (66)



Description

Situated in a desirable school catchment area close to nearby local amenities, Frimley Park Hospital, shops, and schools, is this three-bedroom semi-detached family home which offers a 21ft living/dining area with a feature fireplace, a re-fitted modern kitchen, and a housed utility cupboard. Upstairs there is a separate toilet, modern fitted family bathroom, and three bedrooms including a 13ft main bedroom with built-in wardrobes.

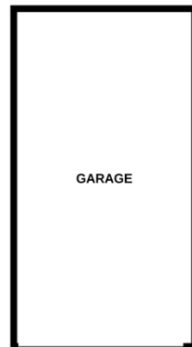
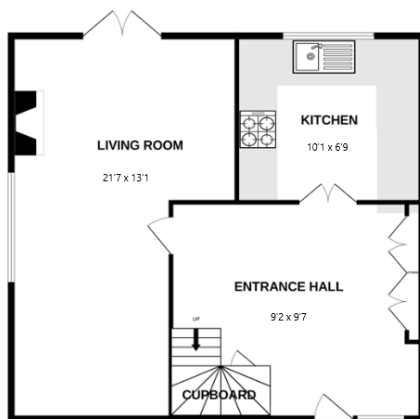
Outside

The garden consists of a square slabbed patio and includes a spacious workshop shed and glasshouse, with access to the garage and driveway via a side gate.

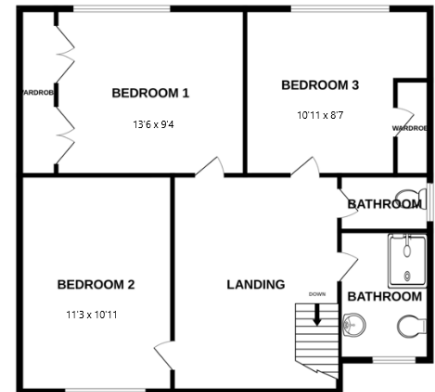
To view the Material Information Certificate for this property please click [Here](#) or contact us to request a copy.

Floorplan

GROUND FLOOR



1ST FLOOR



Whilst every attempt has been made to ensure the accuracy of the floorplan contained here, measurements of doors, windows, rooms and any other items are approximate and no responsibility is taken for any error, omission or mis-statement. This plan is for illustrative purposes only and should be used as such by any prospective purchaser. The services, systems and appliances shown have not been tested and no guarantee as to their operability or efficiency can be given.
Made with Metropix ©2025



TO ARRANGE A VIEWING PLEASE CONTACT:
Tel: **01252 361550** or Email: **info@bridges.co.uk**



Important Notice - These particulars are set out as a general outline only for the guidance of intended purchasers/tenants and do not form part of any offer or contract and must not be relied upon as statements or representations of fact. Purchasers/Tenants must satisfy themselves by inspection or otherwise as to their correctness.