



Two Bedroom Semi-Detached House

Kings Avenue, Tongham, Surrey, GU10 1AX

Guide Price: £425,000

- Two Bedrooms Semi-Detached House
- Driveway and Garage
- Private Rear Garden
- Great Transport Links
- Separate Dining Room
- Flexible Living Space
- En Suite
- EPC: D (63)



Description

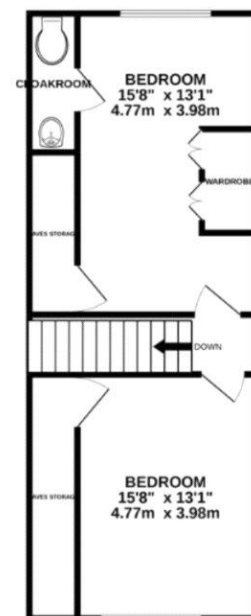
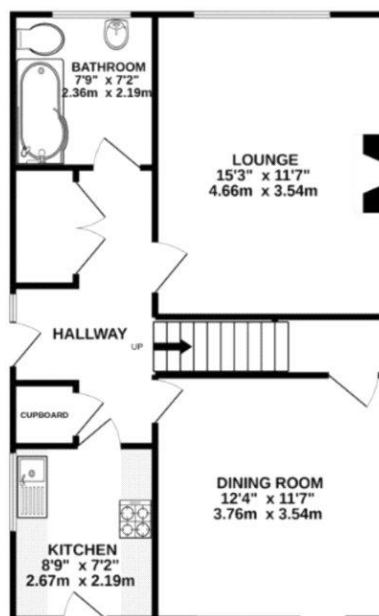
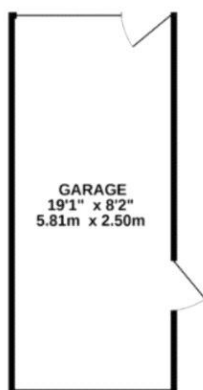
In the heart of Tongham, with easy access to nearby towns, this two bedroom semi-detached home on Kings Avenue blends practicality with potential. A spacious entrance hall leads to a fitted kitchen, dining room with sliding doors to the garden, a welcoming lounge with mains gas fireplace, and a convenient downstairs bathroom. Upstairs, two double bedrooms include a principal with an en suite and built-in wardrobes, while the second offers versatility for guests or a home office. With driveway parking, a single garage, and a sought after residential setting close to local amenities and transport links, this property is an appealing choice near Guildford and Farnham.

Outside

To the front, there is driveway parking and a single garage. To the rear, an easy to maintain garden features areas of plants and shrubs.

To view the Material Information Certificate for this property please click [Here](#).

Floorplan



TO ARRANGE A VIEWING PLEASE CONTACT:
Tel: **01252 361550** or Email: **info@bridges.co.uk**



Important Notice - These particulars are set out as a general outline only for the guidance of intended purchasers/tenants and do not form part of any offer or contract and must not be relied upon as statements or representations of fact. Purchasers/Tenants must satisfy themselves by inspection or otherwise as to their correctness.