



Two Bedroom End of Terrace House

Herrett Street, Aldershot, Hampshire, GU12 4EE

Price: £325,000

- Two Double Bedrooms
- End Of Terrace Home
- No Onward Chain Complications
- Enclosed Rear Garden
- Character Property
- Close to Local Schools and Amenities
- Thoughtful Layout
- EPC: E (47)



Description

A well presented two bedroom end of terrace Victorian family home, offered to the market with no onward chain. Situated in a sought-after area of Aldershot, the property is close to local amenities, highly regarded schools for all ages, and a mainline train station with direct links to London.

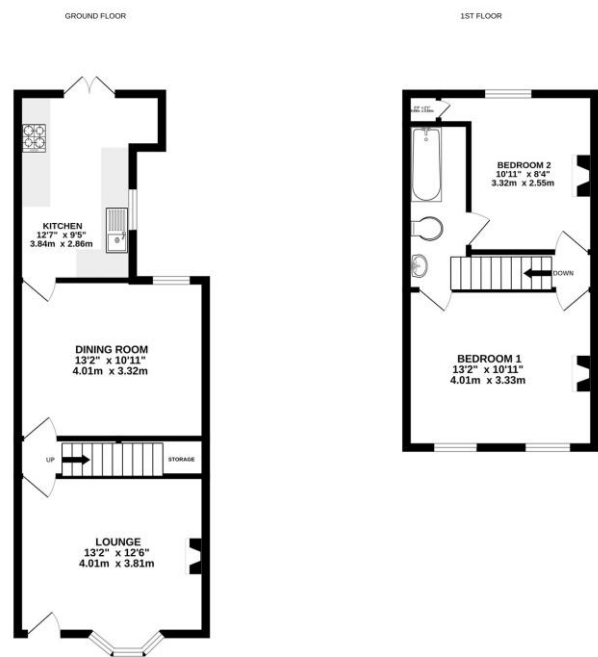
Upon entering, you are welcomed by an entrance hall. The ground floor boasts two spacious reception rooms, one enhanced by a bay window, leading through to the kitchen.

Upstairs, the first floor offers two double bedrooms and a family Jack and Jill bathroom, accessible from both rooms. The rear garden features a decked area, stepping down to a generous lawn and shingle space, providing excellent scope for landscaping.

Outside

To the front of the property, there is a shingled area with on road parking available.
To view the Material Information Certificate for this property please click [Here](#) or contact us to request a copy.

Floorplan



While every attempt has been made to ensure the accuracy of the floorplan, measurements of doors, windows, rooms and any other items are approximate and no responsibility is taken for any error, omission or mis-statement. This plan is for illustrative purposes only and should be used as such by any prospective purchaser. The services, systems and appliances shown have not been tested and no guarantee as to their operability or efficiency can be given.
Made with Metreplan (2020)



TO ARRANGE A VIEWING PLEASE CONTACT:
Tel: **01252 361550** or Email: **info@bridges.co.uk**



Important Notice - These particulars are set out as a general outline only for the guidance of intended purchasers/tenants and do not form part of any offer or contract and must not be relied upon as statements or representations of fact. Purchasers/Tenants must satisfy themselves by inspection or otherwise as to their correctness.