

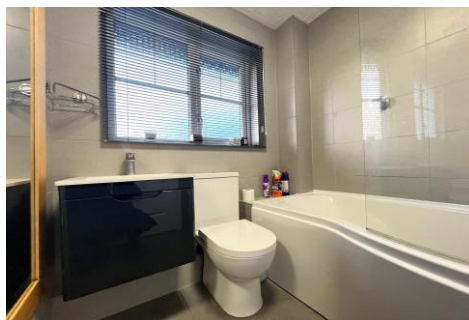


Two Bedroom Semi-Detached House

Parish Close, Ash, Surrey, GU12 6NU

Price: £400,000

- Stunning Two Bedroom House
- Parking
- Orangery
- Refitted Bathroom
- Refitted Kitchen
- Quiet Cul-de-Sac Location
- Walking Distance to Train Station
- EPC: C (72)



Description

Situated within one of the area's most sought after developments is this stunning two bedroom house, complete with parking and a private garden. Set in a quiet cul-de-sac, the property is within walking distance of local amenities and the train station.

The ground floor offers a spacious living room, enhanced by the addition of a beautiful orangery, divided by internal bi-fold doors and featuring underfloor heating. There is also a refitted kitchen and a cloakroom.

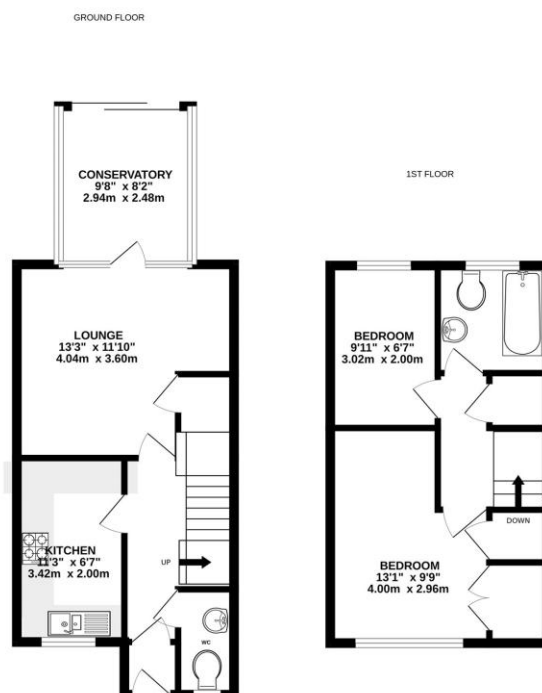
Upstairs, the property benefits from two bedrooms bedroom one with built-in wardrobes and a refitted family bathroom.

Outside

Outside boasts a beautiful private garden and two allocated parking spaces.

To view the Material Information Certificate for this property please click [Here](#) or contact us to request a copy

Floorplan



Whilst every attempt has been made to ensure the accuracy of the floorplan contained herein, measurements of rooms, corridors, rooms and any other parts are approximate and no responsibility is taken for any error, omission or misstatement. This plan is for illustrative purposes only and should be used as such by any prospective purchaser. The services, systems and appliances shown have not been tested and no guarantee as to their operability or efficiency can be given.
Made with Metreplan 12024



TO ARRANGE A VIEWING PLEASE CONTACT:
Tel: **01252 361550** or Email: **info@bridges.co.uk**



Important Notice - These particulars are set out as a general outline only for the guidance of intended purchasers/tenants and do not form part of any offer or contract and must not be relied upon as statements or representations of fact. Purchasers/Tenants must satisfy themselves by inspection or otherwise as to their correctness.