



Three Bedroom Semi-Detached House

Northcote Road, Farnborough, Hampshire, GU14 9EA

Price: £475,000

- Three Bedroom Semi-Detached Home
- Driveway Parking and Garage
- Spacious Rear Garden
- Open Plan Kitchen Dining Room
- Spacious Conservatory Extension
- Ideal Family Living Space
- Offered with No Onward Chain
- EPC: TBC



Description

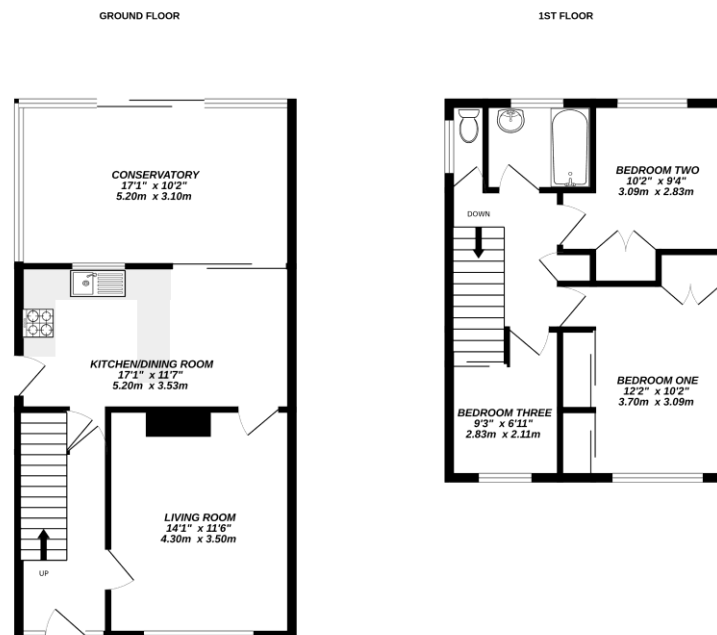
This well presented three bedroom semi-detached home offers generous living space and a layout ideal for modern family life, with further potential to extend or develop subject to the necessary consents. The heart of the property is the open plan kitchen and dining room, providing a bright and sociable setting for everyday living and entertaining. A spacious conservatory extends the living space even further, creating a versatile area perfect as a second lounge, playroom or garden room.

With no onward chain, this home is ready for a smooth and hassle free move. Whether you're a first time buyer, growing family, or investor, the property offers excellent potential for future enhancement alongside a comfortable, welcoming atmosphere from the moment you step inside.

Outside

To the front, the property benefits from its own driveway and an attached garage, offering convenient off street parking and additional storage. The spacious rear garden is a standout feature, a fantastic space for outdoor dining, children's play, gardening, or simply relaxing in the sun. With its generous size and potential for landscaping, it provides a wonderful outdoor extension of the home.

Floorplan



TO ARRANGE A VIEWING PLEASE CONTACT:
Tel: **01252 361550** or Email: **info@bridges.co.uk**



Important Notice - These particulars are set out as a general outline only for the guidance of intended purchasers/tenants and do not form part of any offer or contract and must not be relied upon as statements or representations of fact. Purchasers/Tenants must satisfy themselves by inspection or otherwise as to their correctness.