



Two Bedroom Apartment

Birch Grove, Hook, RG27 9RJ

Price: £215,000

- Two Bedrooms
- Parking
- First Floor
- Close to Village Centre
- Walking Distance to Station
- Suitable for First Time Buyers or Investment
- Well Kept Communal Gardens
- EPC: C (72)



Description

This first floor apartment is located in the heart of Hook, just a short walk from local amenities and the train line. The property features a spacious living room, two bedrooms and a separate kitchen, creating a well balanced layout. Birch Grove benefits from ample residents' parking within the development.

The property is offered for sale with no onward chain.

Outside

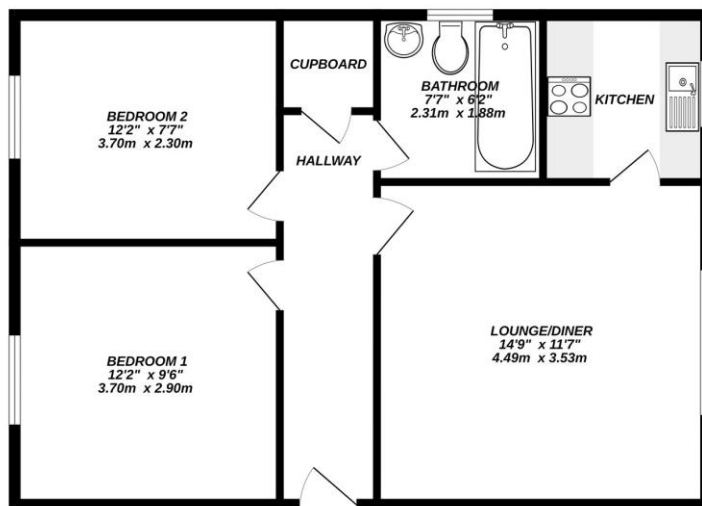
Well kept communal gardens are accessed directly from the property and are mainly laid to lawn, bordered by mature hedgerows and trees.

Birch Grove is just a short walk from local amenities and the train line, which provides direct access to London Waterloo. The development offers excellent parking facilities for residents.

To view the Material Information Certificate for this property please click [Here](#) or contact us to request a copy

Floorplan

1ST FLOOR



Bridges
Made with Metropix ©2025



TO ARRANGE A VIEWING PLEASE CONTACT:
Tel: **01256 769999** or Email: **info@bridges.co.uk**



Important Notice - These particulars are set out as a general outline only for the guidance of intended purchasers/tenants and do not form part of any offer or contract and must not be relied upon as statements or representations of fact. Purchasers/Tenants must satisfy themselves by inspection or otherwise as to their correctness.